



*365-Day Program Timer System*  
*User Guide*

**Model Name : QCM-6600**

**HMT TECH.CO.,LTD.**

Tel.: +886-2-2274-1347 Fax.: +886-2-2273-3014  
[Http://www.hmt.com.tw](http://www.hmt.com.tw) e-mail: [hmt\\_sales@hmt.com.tw](mailto:hmt_sales@hmt.com.tw)

# Catalogue

\*\*\*\*\*

## 1 QCM-6600 Specification

1-1	System Feature .....	01
1-2	Electronic Specification .....	01
1-3	Front Panel Photo & System Descriptions .....	02
1-4	Operation Descriptions .....	03
1-5	Back Panel Connector Diagram .....	05
1-6	Accessory .....	05
1-7	System Functional Diagram .....	06
1-8	Metal Box Dimension .....	07

## 2 SCHEDIT Schedule Edit Software

2-1	Operation Menu .....	08
2-2	New .....	08
2-3	Load .....	09
2-4	Save .....	10
2-5	Clone .....	11
2-6	Clear .....	12
2-7	Rule Check .....	13
2-8	System Setting .....	14
2-9	Connection & Download Setting .....	15

## 1-1 System Feature

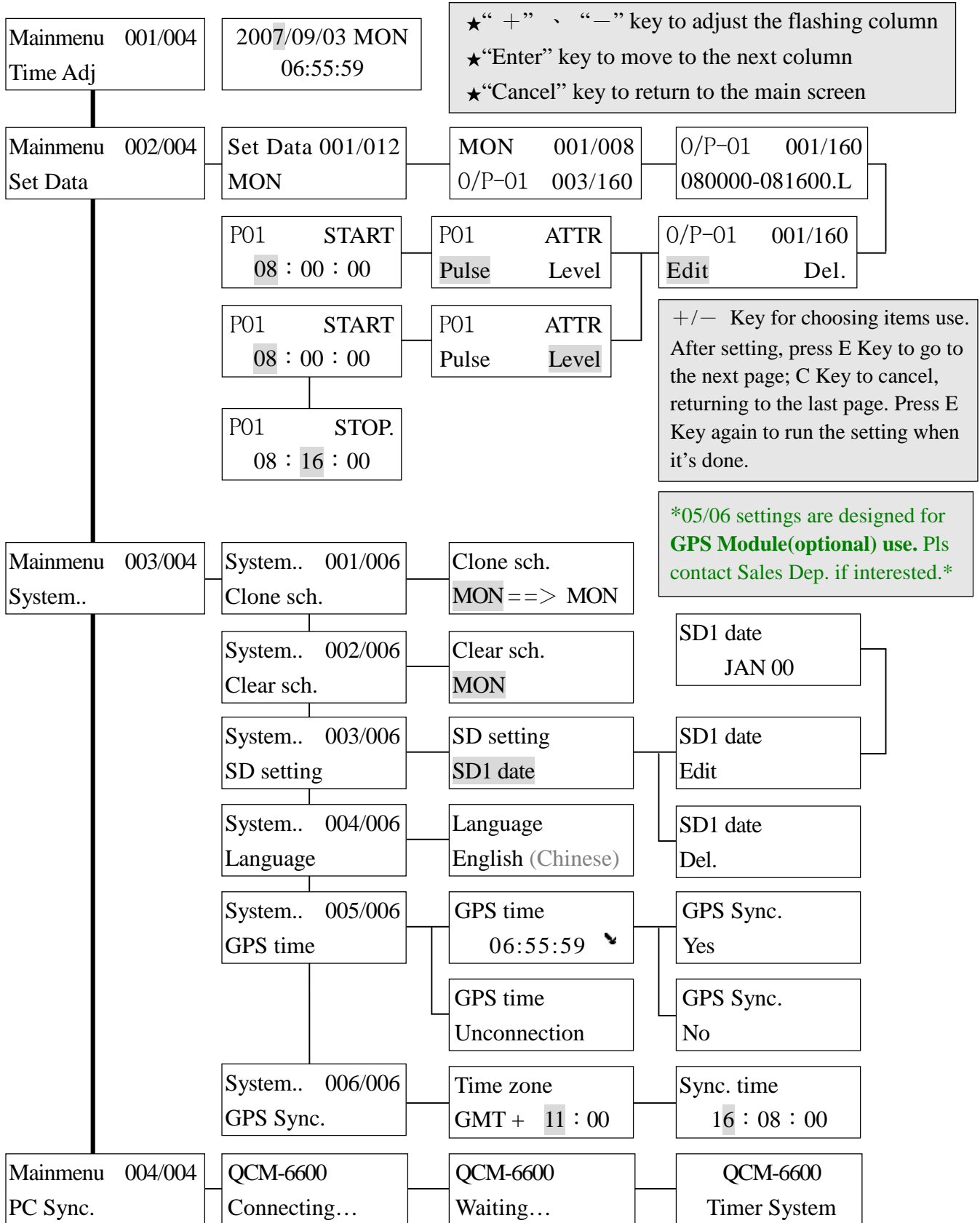
- (1) RS-232, a communication port to PC, for schedule arrangements and data transmission
- (2) Provide 8 outputs for schedule placement
- (3) Up to 160 schedules for each output
- (4) Different schedules for all weekdays
- (5) Able to have the same schedule on each day
- (6) Provide extra 5 “Special Day”s for schedules arrangement
- (7) Fully LCD display in Chinese/English
- (8) All schedules can be set via LCD front panel / the software on PC
- (9) The schedules and calendar will be hold if power failure.
- (10) Display current date and time when in stand-by mode
- (11) **GPS module (optional equipment. Please contact Sales Dep.)**

\*Equipment: GPS 1 on 1 or 1 on 2,3,4... as request.

## 1-2 Electronic Specification

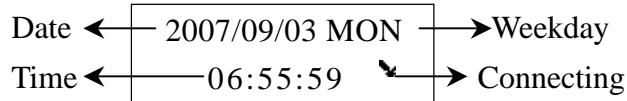
- (1) Power Supply : DC 12V / 1.5A An ADAPTOR (free), AC100-240-DC 12V
- (2) Display : 122x32 pixels, Chinese/English, LCD back lighted panel
- (3) Function Key : 4-key function key
- (4) Power Off Data Storage : 10 years
- (5) Minimum Unit of The Time Setting : 1 second
- (6) Output Pin : 8 units for programming, Pulse/Level setting
- (7) Standby Status Display : Year(4-digit)-Month-Day-Weekday, Hour : Minute : Second
- (8) Dimension : Standard 1U Industrial Metal Box

### 1-3 Front Panel Photo & System Descriptions



### 1-4 Operation Descriptions:

#### ◆ Main Screen(Stand-by mode)



#### ◆ Key PAD

+ Key: ①Adjust the flashing column  
(increasing by one)  
②Select the last item

- Key: ①Adjust the flashing column  
(declining by one)  
②Select the next item

ENTER Key: ①Enter Main Menu  
(to enter the preferred page)  
②Move to the next column  
③Finish the setting

CANCEL Key: ①Return to the main page  
②Return to the last page  
③Cancel

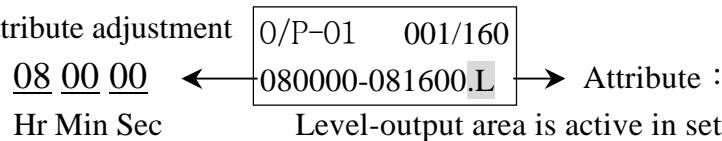
#### ◆ Time Adjustment

Follow Year/Month/Day (YYYY/MM/DD), 24 hours (HH:MM) format.

+/- Key for adjusting date, weekday and time. ENTER Key for moving to the next column.

#### ◆ Schedule Setting

- ①12 data in total (Monday ~ Sunday, Special Day 1 ~ Special Day 5)
- ②8 outputs available on each day
- ③160 schedules available for each output
- ④ +/- Key for time /attribute adjustment



Level-output area is active in setting time.

Pulse-output area is active within one second after the setting "start time".

#### ◆ System Setting

+/- Key are for item selections. ENTER Key for moving to the next column/Finish the setting.

- ①Data Clone- A week as a unit to clone the data from 8 outputs
- ②Date Clear- A week as a unit to clear the data from 8 outputs
- ③Special Day Setting- A **priority** for schedules on special days while **inactive** for normal days
- ④Language- 2 selections- Chinese/English interface

⑤GPS time- Synchronize the current GPS time with QCM-6600 immediately

⑥GPS sync. Setting - Set the local GMT time zone and GPS time synchronously

⑤、⑥ are for GPS Module use. (Optional equipment. Please contact the Sales Dep.)

#### ◆ PC Sync.--Connection Renew

- ①Connect RS-232 to PC for software use--download and program data.
- ②When the system enters "Waiting...", it starts detecting whether the software, QCM6600.EXE., is connecting and downloading.  
If the connection is not successful and the status lasts for more than 30 seconds long, the system will return to the main page. Suggest force to reset the system and then turn it on again.

<Attention>

- 1.) For data transmission, please run QCM6600.EXE software on PC to program and download
- 2.) When the system is in the setting mode, the function of automatic broadcast will stop, but the clock and RTCC functions work still
- 3.) To sure the timer system can function, please check if it is in operation (in stand-by mode)
- 4.) Do not cut off the power supply when the system shows "Saving", "Clearing" or "Transmitting"
- 5.) Time setting rules for schedules (minimum unit: "second")

Sample schedule	AM 08:00:00					AM 08:10:00(Level)					
invalid msg.	AM 08:00:00					AM 08:12:00 (Level)	Overlan with the sample „start time“				
invalid msg.			AM 08:10:00			AM 08:10:01(Pulse)	Overlan with the sample „end time“				
invalid msg.		AM 08:05:00					AM 08 : 20 : 00 (Level)	Overlap with the example schedule			
valid msg.			AM 08:10:01			AM 08:10:02(Pulse)					
valid msg.			AM 08:11:00							AM 08:30:00(Level)	

Pulse Attribute : Output area is active within one sec. after the setting "start time".  
 Level Attribute : Output area is active in setting "start time" & "end time".  
 Rules for setting : 1. Schedules on Start/Ending time cannot overlap with saved schedules.  
 2. Schedules cannot overlap with saved schedules.

Schedule Saving : When return to this page for schedule settings saving!

0/P-01    001/160  
 080000-081600.L

after schedule settings, move to the previous page

\*This screen 

0/P-01  
Data Saving!

 means the saving is done successfully!

6.) Msg. Priority Rules: **Unavailable Day > Special Day Schedule > Week Day Schedule**

Week Day : QCM-6600 P1~P8 outputs for MON~SUN schedules

Special Day : QCM-6600 P1~P8 outputs for SD1~SD5 schedules

Unavailable Day : QCM-6600 P1~P8 outputs for inactive schedules

Eg1:

<b>Weekday Schedule</b> (inactive)	PO1	AM 08:00:00		3/23 MON		AM 08:10:00(Level)				
⊙ SD Schedule	PO1		AM 08:05:00	3/23		AM 08:05:01(Pulse)				
Unavailable Day				null						

\*When the SD is the target day and there's a schedule on a week day in QCM-6600, schedules on **SD** are activated!

Eg2:

Weekday Schedule (inactive)	PO1	AM 08:00:00	3/23 MON	AM 08:10:00(Level)
SD Schedule	PO1		null	
⊙ Unavailable Day			3/23	

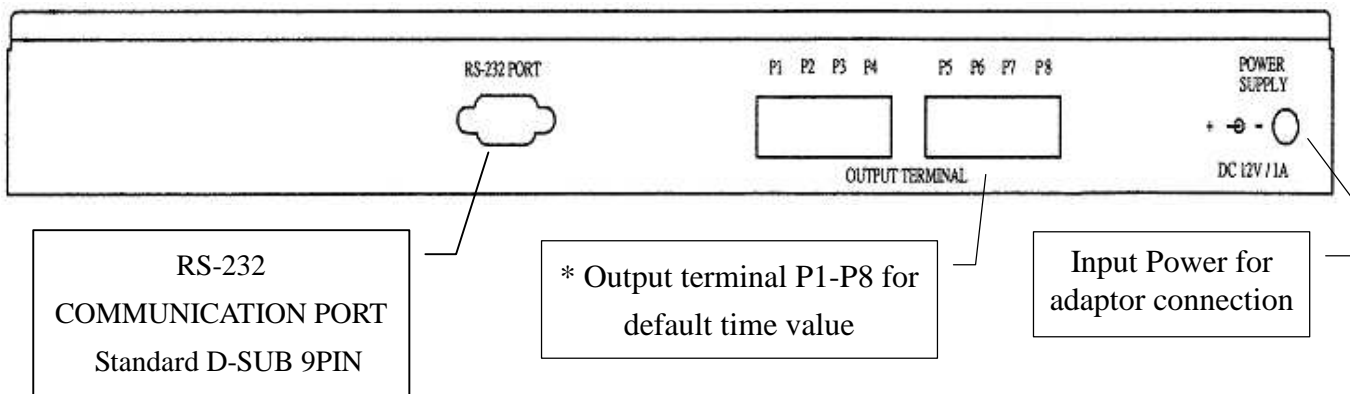
\*When the unavailable day is the target day and there's a schedule on a week day in QCM-6600, **no schedules are activated!**

7.) Schedule Arrangement Operation Settings

	QCM-6600 Panel (Manuel) Setting	PC Software Tool Setting
Weekday Schedule	✓	✓
SD Schedule & SD Date (SD1~SD5)	✓	✓
Unavailable Day-Date	✗	✓

1-5 Back Panel Connector Illustration

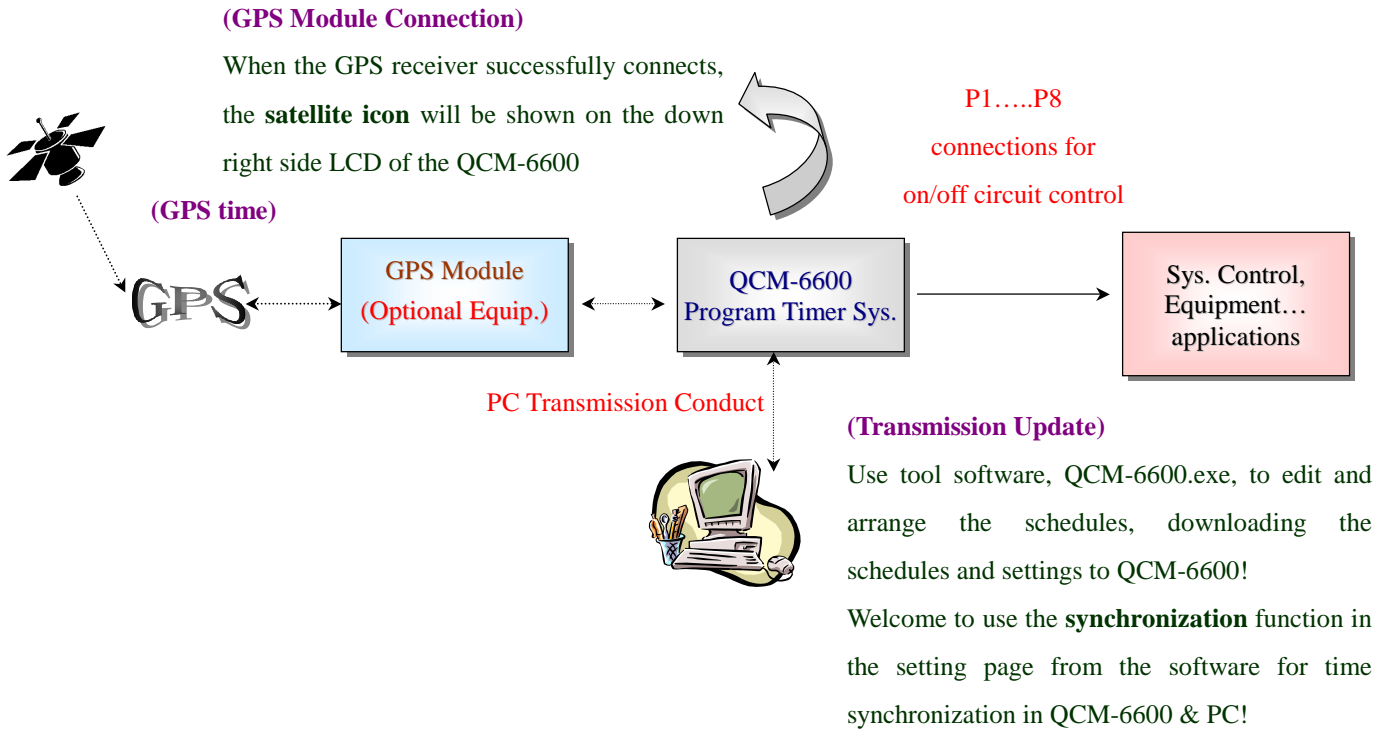
Back Panel RS-232 PORT / CIRCUIT CONTROL OUTPUT CONNECTOR / POWER SUPPLY ILLUSTRATION :



1-6 Accessory

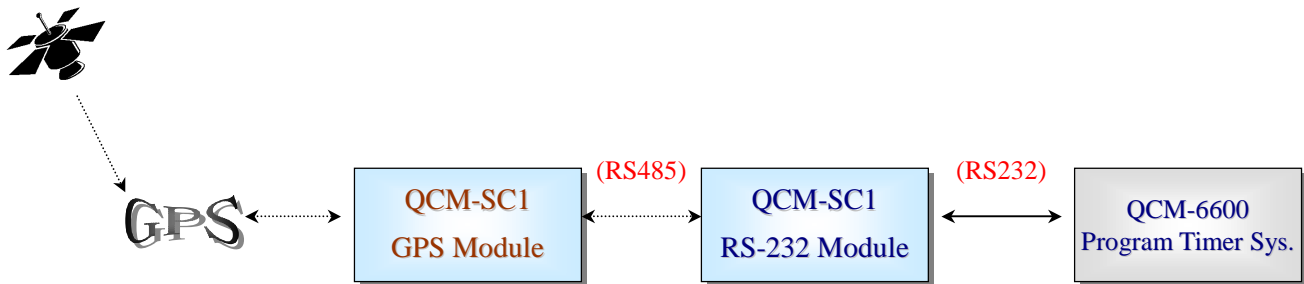
- (1) Adapter × 1 (Specification: 100~240-V, AC TO DC, 12V 1.5 A)
- (2) Fixed L shape iron for standard 19" (rack for mounting) × 2 pcs
- (3) CD-ROM × 1

### 1-7 System Functional Diagram

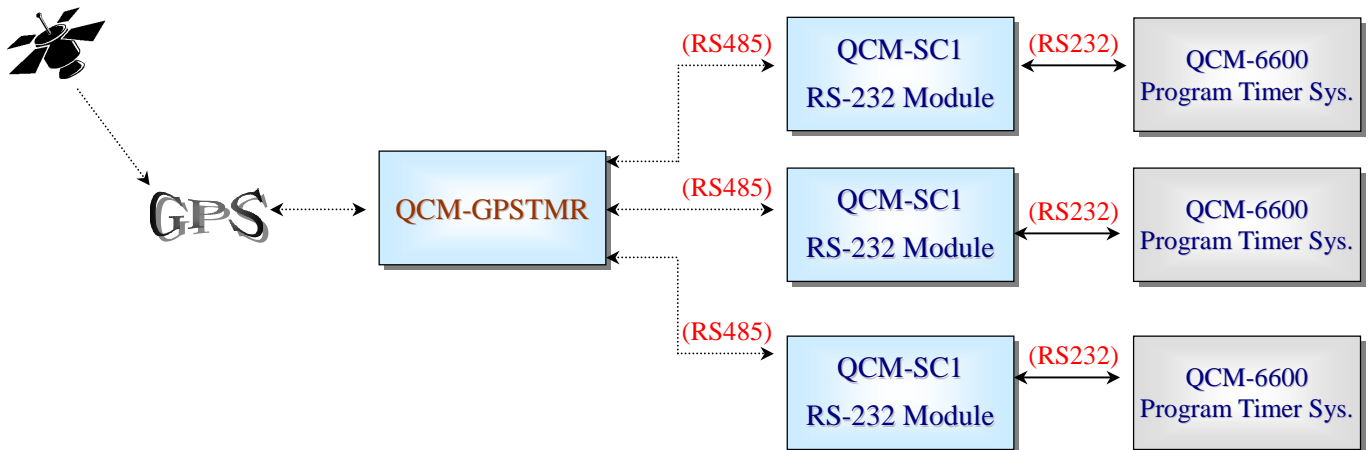


\*GPS Module optional equip.: Requested selections- GPS 1 on GPS 1 on 2,3,4...

- GPS 1 on 1

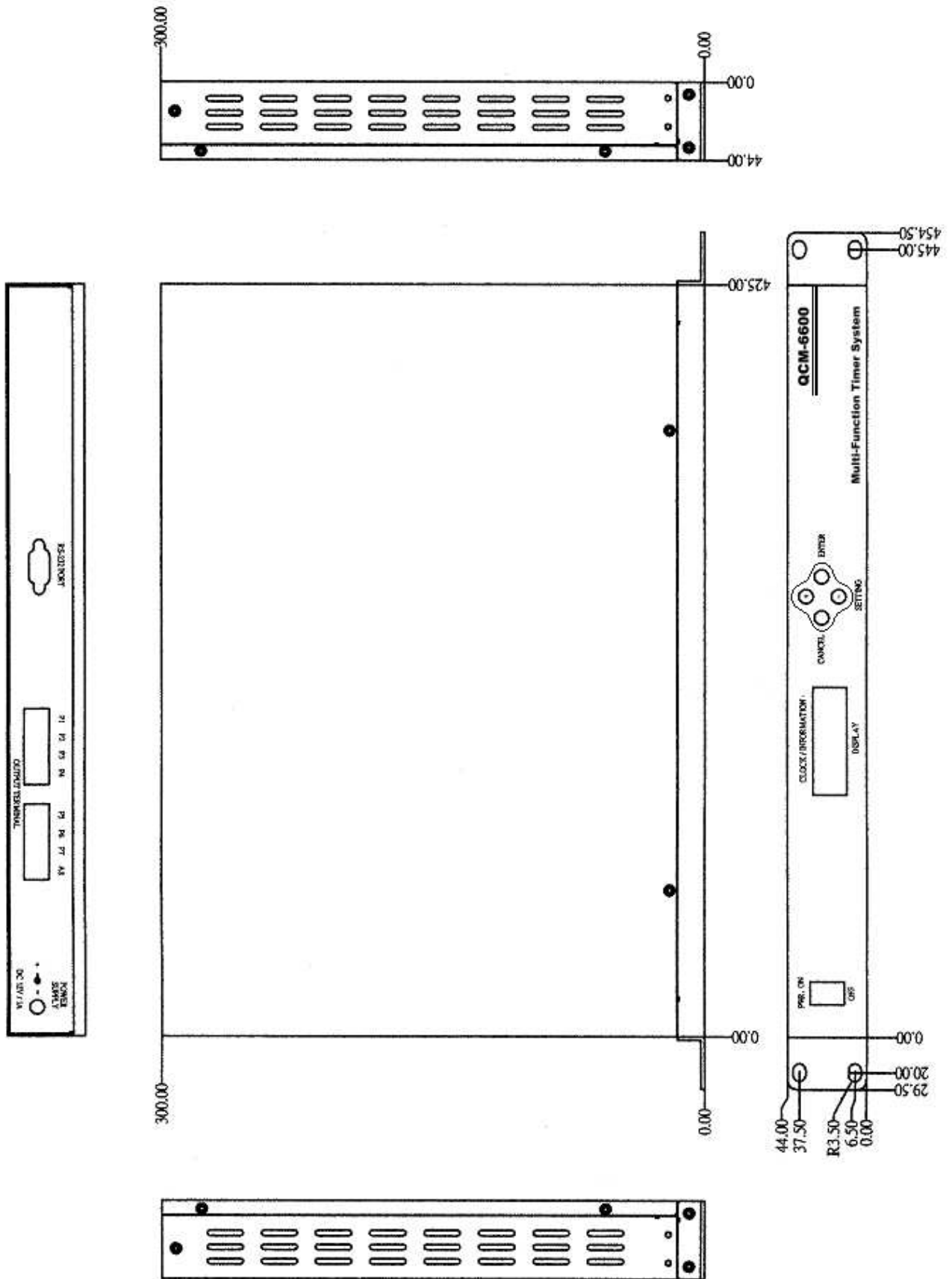


- GPS 1 on 2,3,4...





### 1-8 Metal Box Dimension



## SCHEDIT Software User Guide

- Version: QCM-6600 Software V1.0 (Build- 80306)

QCM-6600, supported with **SCHEDIT Software**, can connect to PC for synchronization and downloading, making the system flexible and efficient. Conduct QCM6600.exe and load the file, sample.qcp, from the software. Then, users will see the setting steps below. Here’s an example:



### 2-1 Put-down Menu :

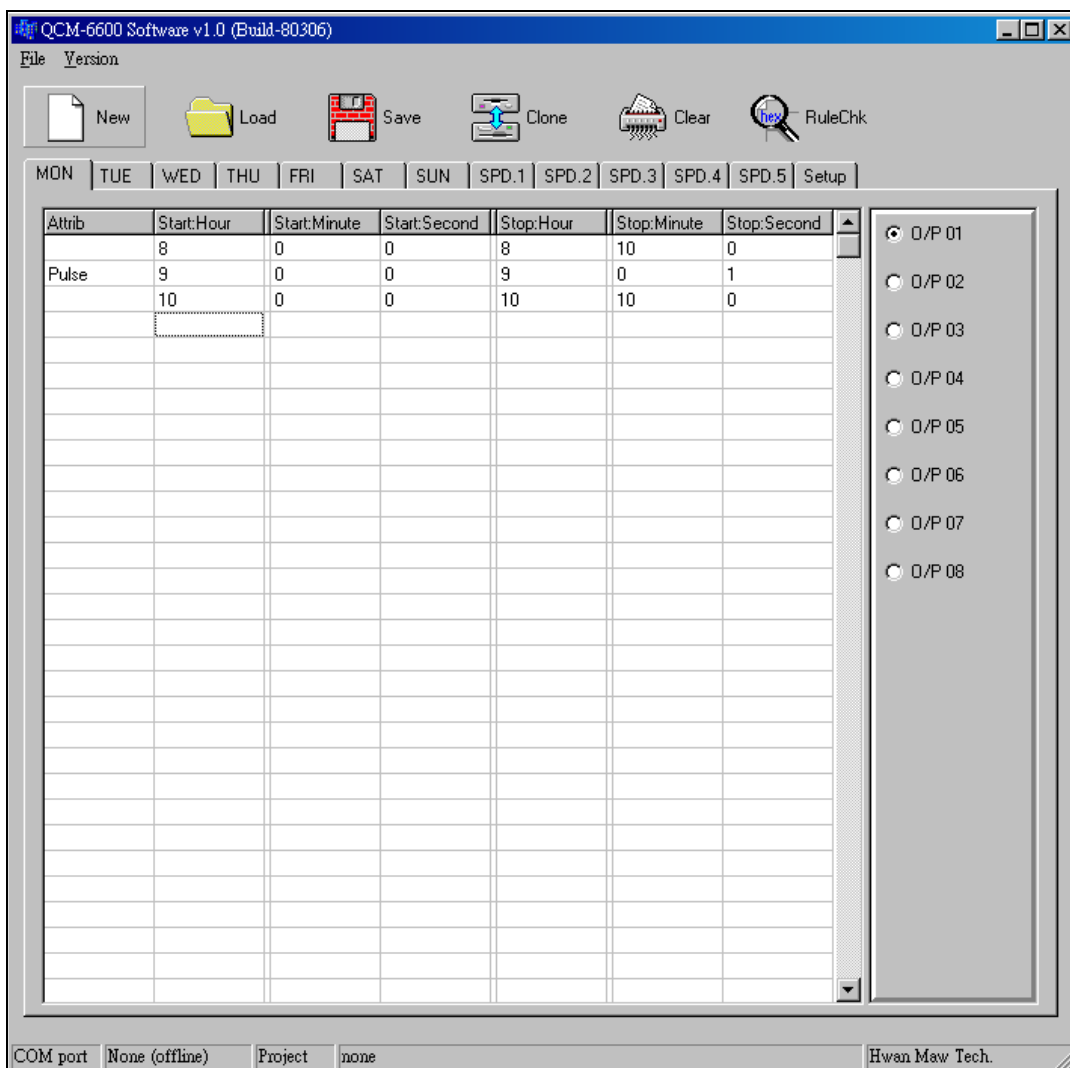
- 1.File : New/Load/Save
- 2.Version(Language) : Chinese/English interface

### 2-2 New : Available schedules for a week long & five special days. Provide 8 outputs for everyday!

- ①Every new file will cover the existing one when saving. The system will warn users before file overlapping.
- ②To delete the targeted row immediately, please click on the mouse right key!
- ③Output Mode : Level Attribute(able to set the function duration- start/end time).

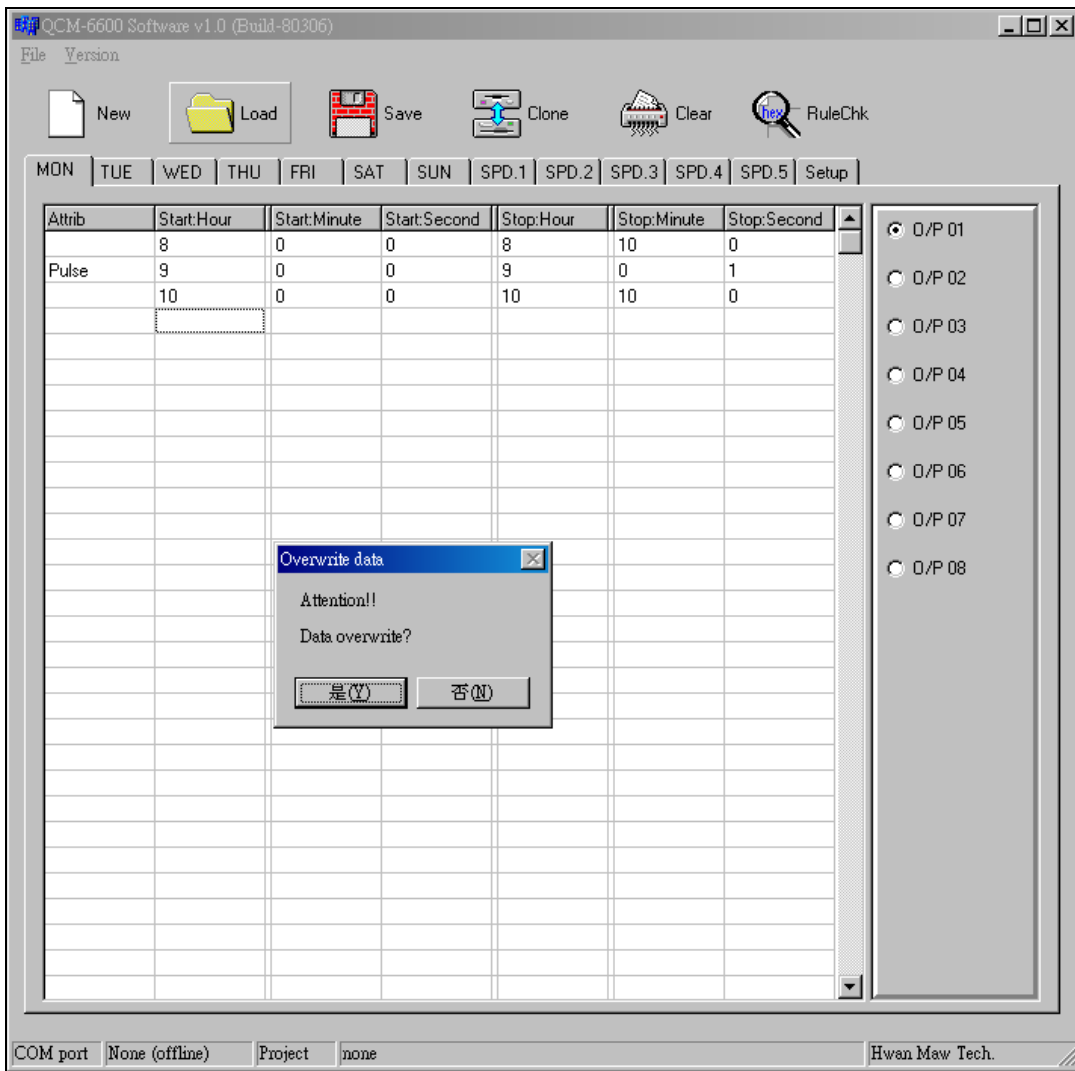
The blank on the output mode means Level.

**Pulse Attribute (only able to set the start time. It functions for one second long and then stops automatically).**



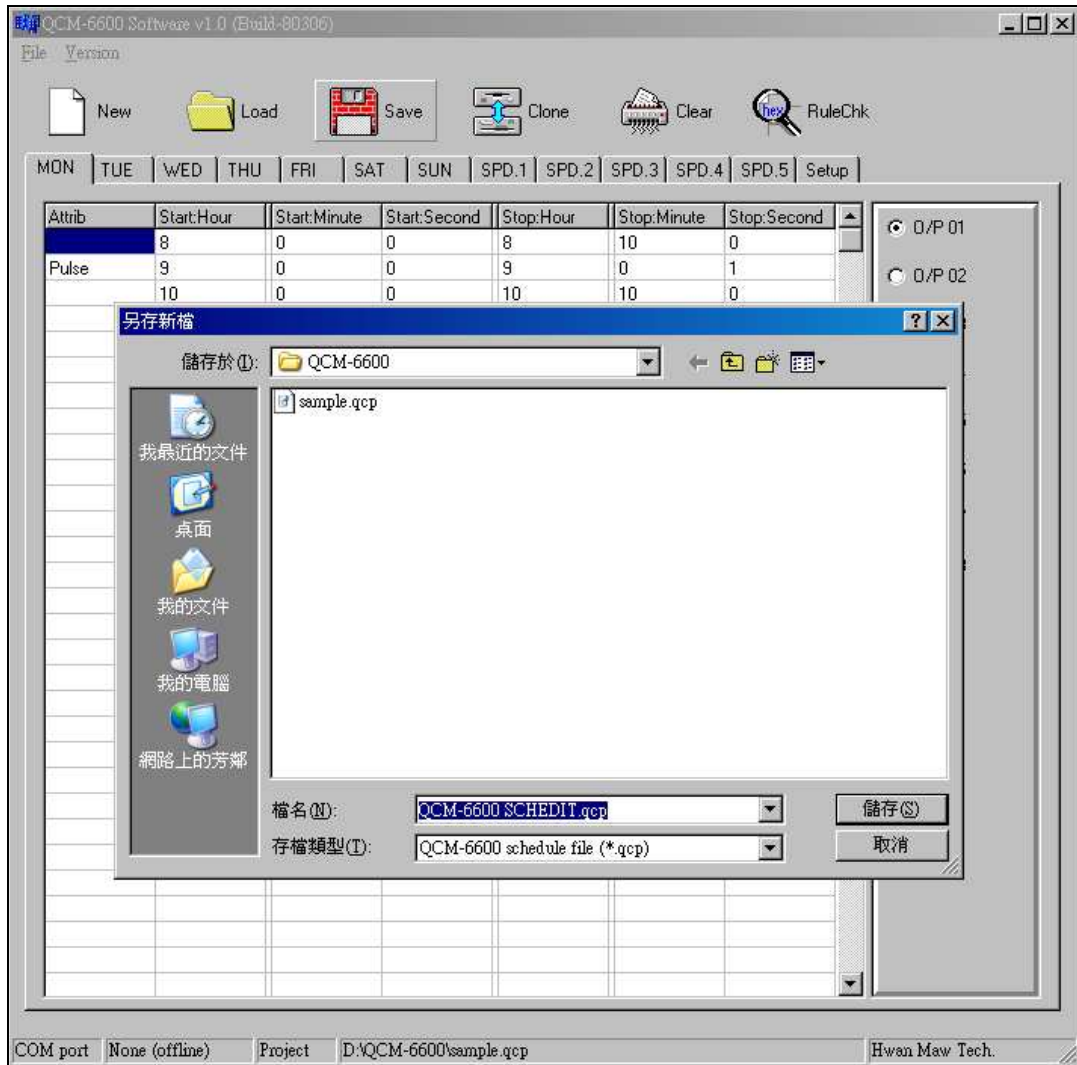
**2-3 Load :** Load the previous files for resetting/revising

- ① When load a file, it will cover the existing one. There will be a warning for data overwriting.
- ② **Extension name for QCM-6600 : qcp**



**2-4 Save :** When the schedules are done, click on “Save” icon to save settings.

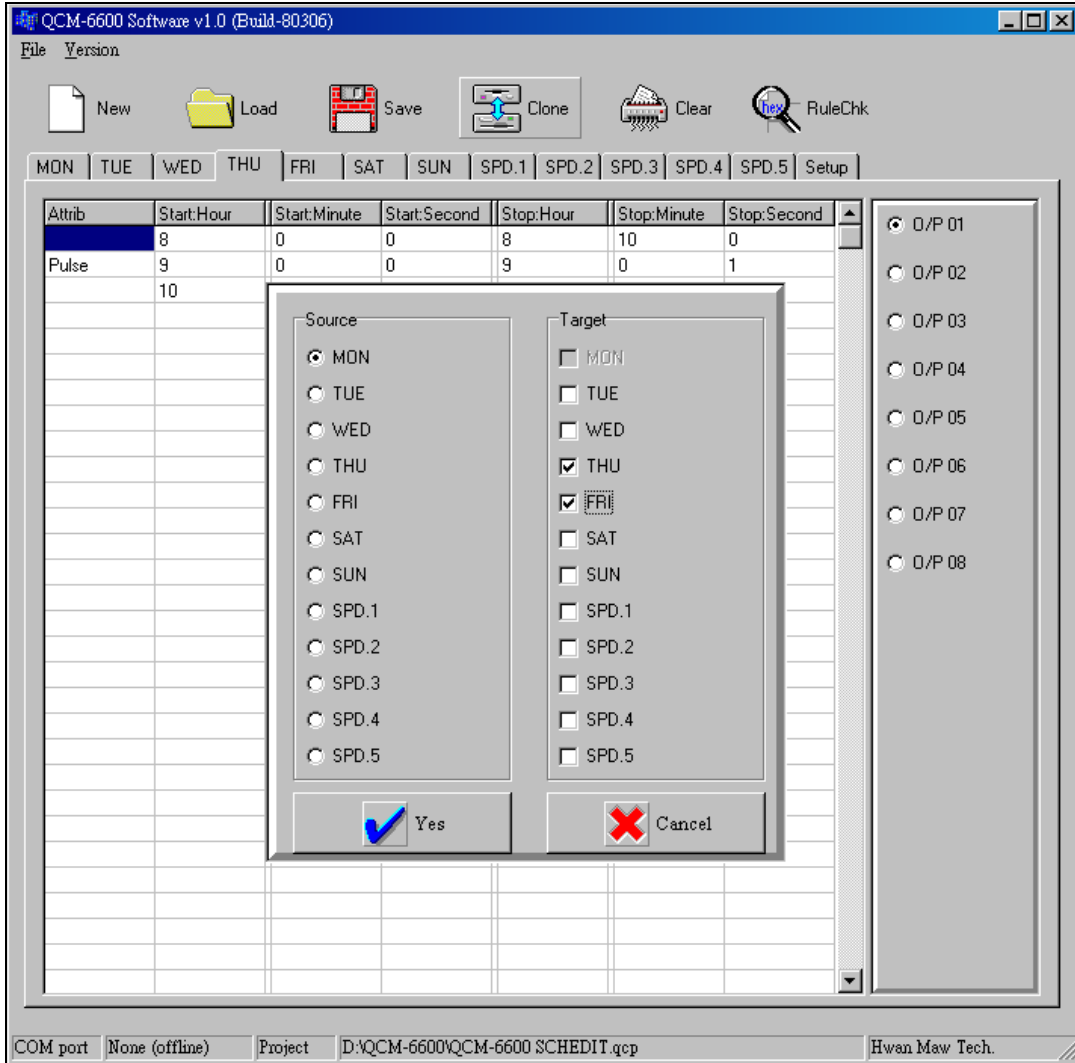
- ① If users revise the saved file, the message box "Overwrite file" will show up to ask whether to overwrite the previous one.



**2-5 Clone :** Clone the requested schedule to other target days.

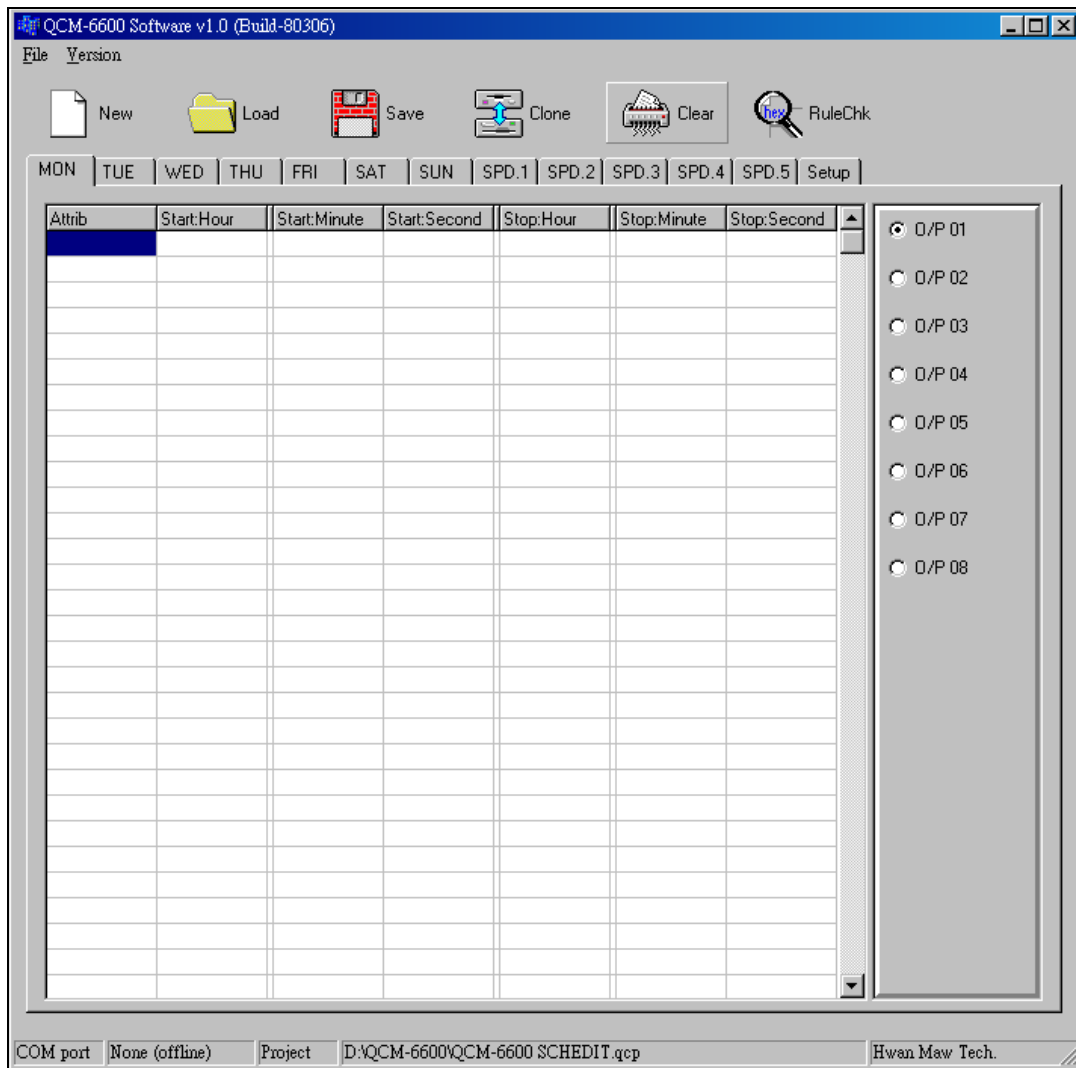
①Click on “Clone” icon to see the setting box. Tick preferred items and then click on “Yes” button to complete the Clone step.

②Example below: To have MON schedules on THU & FRI, please tick THU & FRI from the Target area and select MON from the Source area, clicking on “Yes” button to complete the step.



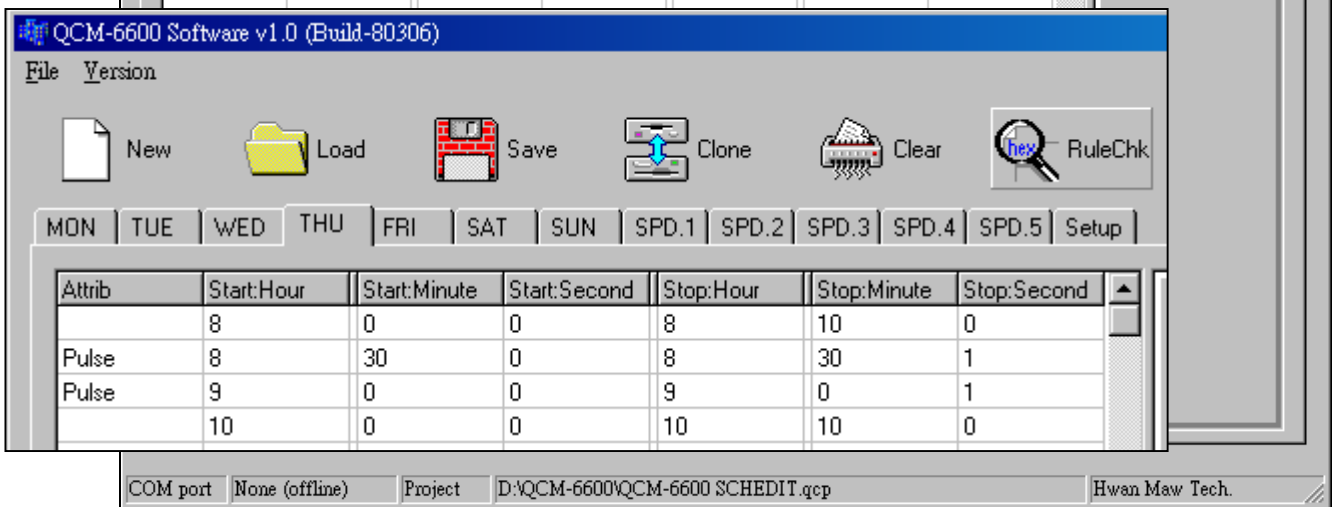
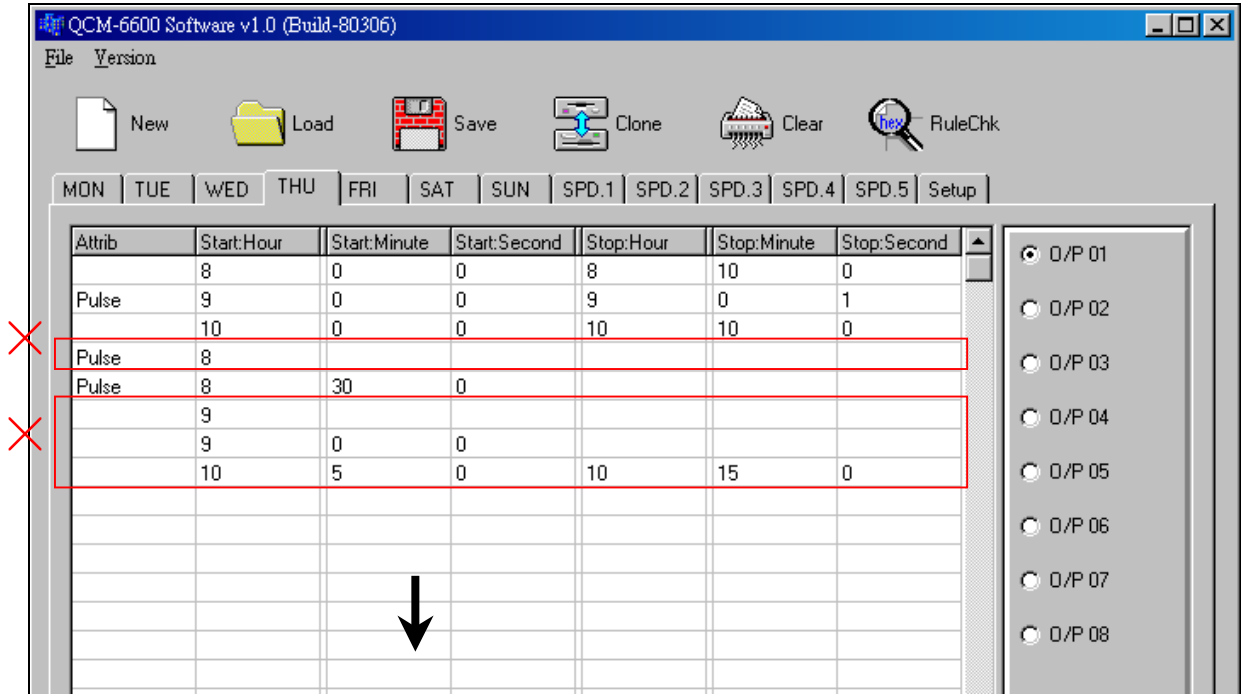
**2-6 Clear :** Click on “Clear” icon to delete the schedules on the selected day.

① Example below - Clear schedules on “Monday”.



**2-7 RuleChk :** To check invalid messages from the schedule arrangements and delete them.

- ① "invalid message": time overlaps/input errors in schedules.
- ② Example below : Delete the schedules in the red columns when check up; delete schedules for time overlaps and input errors. No warning msg. before the deleting action.
- ③ After check up, rearrange the schedules in time order.

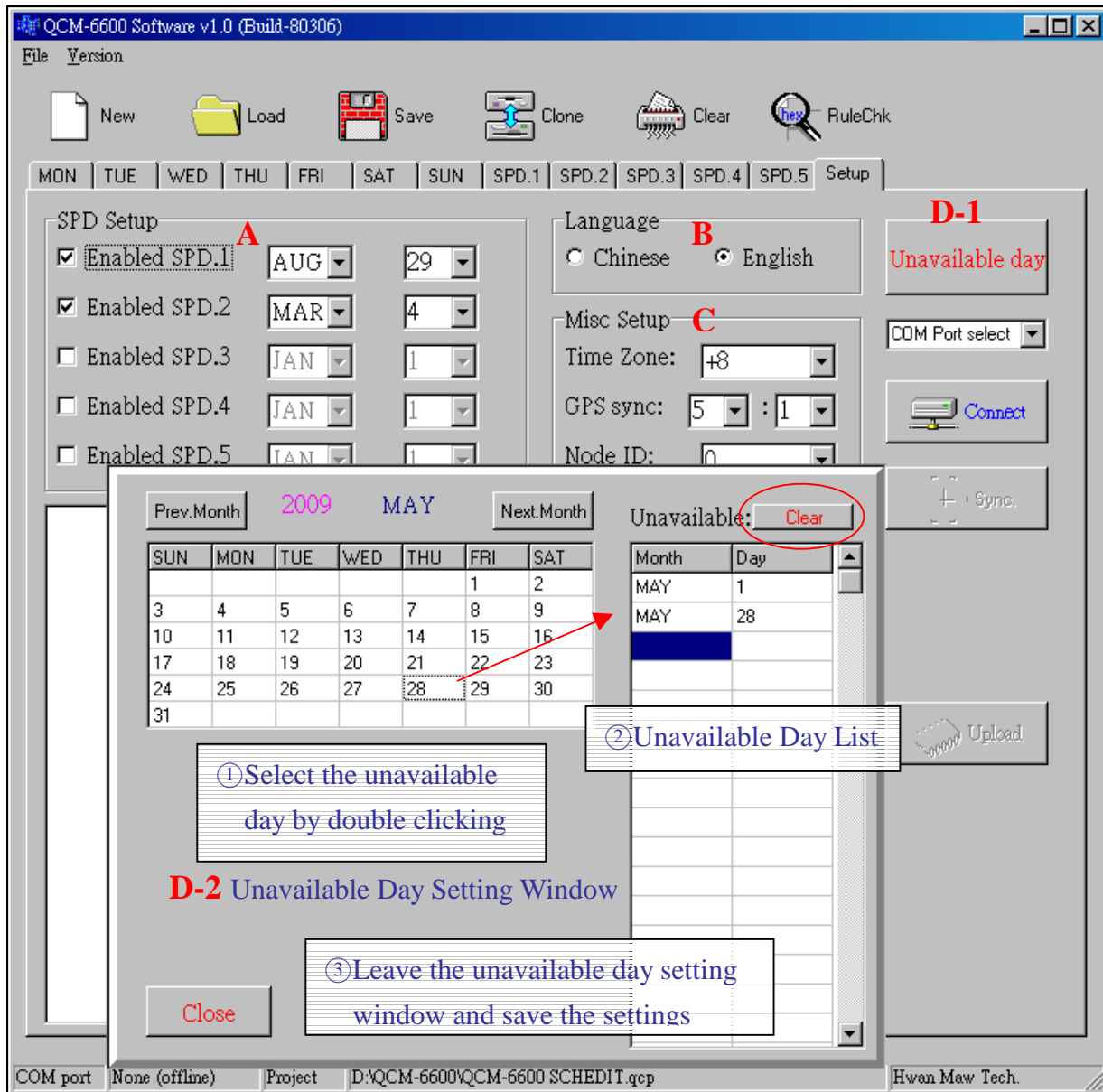


**Check up descriptions :**

Output mode	Start : Hour	Start : Minute	Start : Second	Stop : Hour	Stop : Minute	Stop : Second	Descriptions
Pulse	8						Start data incomplete
	9						Start data incomplete
	9	0	0				Stop data incomplete
	10	5	0	10	15	0	Start time overlap

Output mode	Start : Hour	Start : Minute	Start : Second	Stop : Hour	Stop : Minute	Stop : Second	Descriptions
Pulse	8	30	0				∴ Pulse attribute ∴ No other input for Stop time, the software sets Stop time: <b>Start time +1 sec. automatically.</b>
			↓				
Pulse	8	30	0	<b>8</b>	<b>30</b>	<b>1</b>	

**2-8 System Setting :** Set the related status and transmit it to QCM-6600 via RS-232.



A SPD Setup: Select the date from the pull-down menu. Leave blanks if no SPD.

B Language: Chinese/English version for QCM-6200GS system interface setting

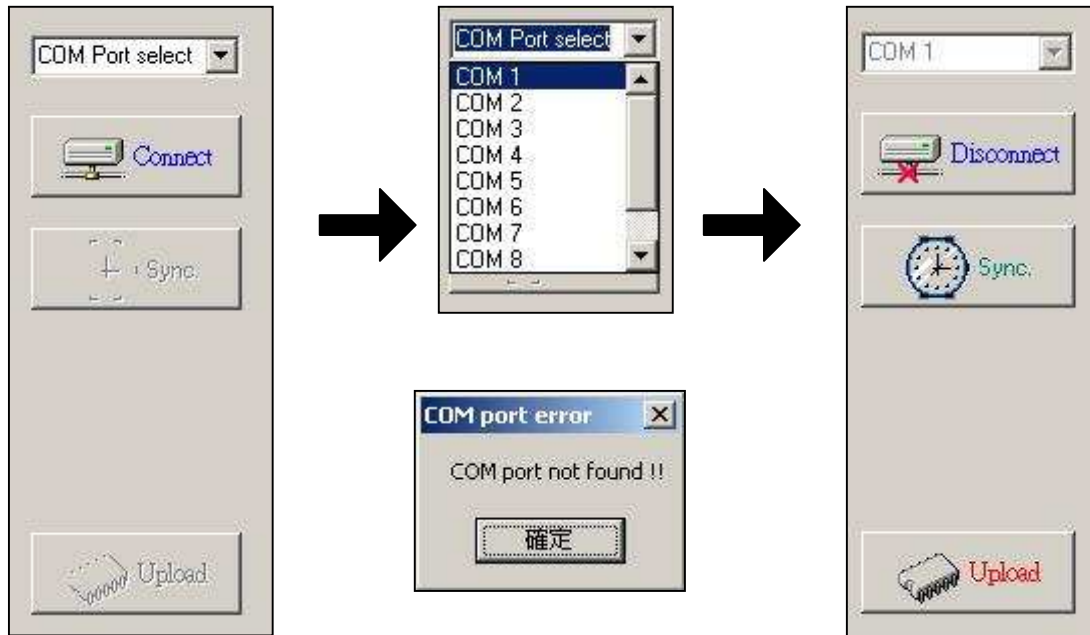
C Other Settings: time zone, GPS synchronization, Node ID (Transmit the ID via PC to QCM-6600 system).

D-1 Unavailable Day Setting : Open the unavailable day setting window to arrange the dates for unavailable day.

[Note] Click on “Clear” icon (in the red circle) to “clear all the schedules” on unavailable day immediately!! To delete schedules on a single date, please select the preferred date. Then single click on the right key to complete this step.



## 2-9 Connection & Download Setting



1. Select the COM port
2. When the connection is done, “Sync.” & “Upload” functions will be valid.

**\*Before synchronization and download, please enter the main menu→Transmission from the front LCD panel on QCM-6600!**

4. Sync. (Synchronization): Synchronize date and time in QCM-6600 with them in PC
5. Upload: When the uploading PC settings to QCM-6600 is done, QCM-6600 will reset itself and return to the standby mode!

### Message Box :

Msg. content	Description
>>>Open COM1<<<	Connection Msg.
====> QCM-6600 connection response time-out #1<==== ====> QCM-6600 connection response time-out #2<====	Disconnection Msg.
>>>Close COM1<<<	Off line
*** Synchronize date & time in QCM-6600 *** ==== Wait for QCM-6600 response.... ==== ====> Send data block: 1,CRC = 41 <==== ====> Date & Time Sync. Done <====	Date/Time Sync.
Check rules in schedules..... Make “ROM” (a setting file)..... *** Updating QCM-6600 schedules *** ==== Wait for QCM-6600 response.... ==== ====> Send data block: 1,CRC = FD <==== ====> Send data block: 2,CRC = A5 <==== ====> Send data block: 3,CRC = F2 <==== ====> Schedules in QCM-6600 UPDATED<====	Data Transmission