



*Automatic Timer Broadcast System*  
*User Guide*

**Model Name : QCM-6200**  
**VER. G**

**HMT TECH.CO.,LTD.**

# Catalogue

\*\*\*\*\*

Content

Page

## 1. QCM-6200 G Specification

1-1 System Feature .....	01
1-2 Electronic Specification.....	01
1-3 Front Panel Photo & System Function new function / attention.....	02
1-4 Manual Operation List .....	04
1-5 Back Panel Connector Illustration.....	05
1-6 Accessory.....	05
1-7 System Functional Diagram.....	06
1-8 Schedule Volume Output Adjustment.....	06
1-9 Metal Box Dimension Illustration.....	07

## 2. VCM-SERIES Digital Voice Module Tool Software Operation Instruction

### 2-1 CF LINKER Tool Software

2-1-1 Selection for Product Series & Trigger Mode.....	08
2-1-2 Option Setting.....	09
2-1-3 Voice Source File Setting.....	10
2-1-4 Sentence Arrangement.....	11
2-1-5 Trigger – Arrange a Sentence code.....	13
2-1-6 Make CFO File.....	14
2-1-7 Program CFO & Write in CF Memory Card.....	17
2-1-8 VCM-CF Series Malfunction Alarm.....	18
2-1-9 VCM-CF Series Storage Voice Length Measurement.....	18

# Catalogue

\*\*\*\*\*

Content

Page

## 2-2 TRUEWAVE-Voice Edit Software

2-2-1	Voice Sourcing.....	19
2-2-2	Voice Record.....	20
2-2-3	Voice Edit.....	22
2-2-4	Sentence Copy.....	23
2-2-5	Sentence Edit.....	25
2-2-6	Save .....	26

## 2-3 SCHEdit Schedule Edit Software

2-3-1	Operation Menu.....	28
2-3-2	New.....	28
2-3-3	Load .....	29
2-3-4	Save .....	30
2-3-5	Clone .....	31
2-3-6	Clear.....	32
2-3-7	RuleChk .....	33
2-3-8	System Setting.....	34
2-3-9	Connection Setting.....	35
2-3-9	Data Download.....	35

## 1-1 System Features

- (1) Built-in memory : **CF card**. Play tracks: **99 tracks**
- (2) **Built-in 6 melodies**. (Please refer to the manual if you want to hear in advance)
- (3) **RS-232, a communication port to PC, for schedule arrangements and data transmission**
- (4) **Volume adjustment in each schedule is controllable**
- (5) Up to 80 schedules to be set freely on each weekday
- (6) Different schedules for all weekdays
- (7) Able to have the same schedule on each day
- (8) Provide extra 5 “Special Day”s (Each has 80 schedules at most) for schedule arrangement
- (9) Provide 7 relay output pins for programming
- (10) Provide one relay output pin to be triggered for starting an outer amplifier
- (11) Fully LCD display in Chinese/English
- (12) All schedules can be operated via the LCD front panel
- (13) Output pins and melody performances can be activated manually or automatically
- (14) The schedules and calendar will be hold if power failure
- (15) Display current date and time when in stand-by mode
- (16) **External GPS module (Optional equipment. Please contact the Sales Dept.)**

## 1-2 Electronic Specification [ for VCM-CF series ]

- (1) Power: DC 12V / 1.5A An ADAPTOR (free), AC100-240-DC 12V
- (2) Display: 122x32 pixels, Chinese/English LCD back-lit panel
- (3) Function Key: 4-key function key
- (4) Power Off Data Storage: 10 years
- (5) Minimum Unit of The Time Setting: 1 minute
- (6) Output Pin: 8 units (7 units can be used as program controller. 1 unit can be an output for default value)
- (7) Standby Status Display: Year (4-digit) - Month - Day. Clock time: Hour : Minute : Second
- (8) A.F. Output: 3V p-p / 600 ohm(Ro)
- (9) THD Rate:  $P_o=20W$  ,  $f=1kHz$  , 0.02 %  
 $P_o=20W$  ,  $f=40Hz$  to  $15KHz$  , 0.05 %
- (10) S/N Rate: 100 – 108 db
- (11) Internal Speaker: 1W, 30 db
- (12) Frequency Response: 100-20kHz
- (13) Dimension: Standard 1U Industrial Metal box

# 1-3 Front Panel Photo & System Function



Menu **A01/04**  
Time adjustment

★“+”, “-” key to adjust the flashing column  
 ★“Enter” key to move to the next column  
 ★“Cancel” key to return to the main screen

Menu **A02/04**  
Schedule Setting

Schedule Setting **A01/12**  
SUN

Sunday Schedule **A01/80**  
00:00 – 00:00

Sunday Schedule **A01/02**  
Revise Schedule?

Sunday Schedule **A01/02**  
Delete Schedule?

*\*It'll take more time if there are a lot more schedules to be deleted at one time\**

Sun. Schedule **A01/80**  
Starting Time 00:00

Sun. Schedule **A01/80**  
Ending Time 00:00

Sun. Schedule **A01/80**  
Play Track 00

★+, - key are used to adjust the flashing column  
 ★E key is used to move to the next column  
 ★C key is used to jump back to the main screen  
 ★Select from track 00 ~ 99  
 If the setting is 00, it means no track plays.  
 ★Output channel can be set as the followings:  
 Stop-CH1~CH7-All

Sun. Schedule **A01/80**  
Output Channel **suspend**

Volume **A01/80**  
Attenuation / Amplification

+ , - key to select the column  
 And then, press E key to execute the program

Menu **A03/04**  
System Setting

System Setting **A01/07**  
Copy Schedule

Copy Schedule Data  
Sun. ==> Sun.

System Setting **A02/07**  
Clear Schedule

Clear Schedule Data  
SUN

Special Date 1  
Revise?

Special Date 1  
Jan. 01

System Setting **A03/07**  
Special Date Setting

Special Date Setting  
Special Date 1

Special Date 1  
Delete?

System Setting **A04/07**  
\*Schedule Shift\*

\* Schedule Shift \*  
**Schedule A or B**

★+ , - key to adjust the flashing column. Then click “E” key  
 ★Click “C” key to cancel and return to the previous page.

System Setting **A05/07**  
Language

Language  
Chinese/English

GPS Synchronization  
Yes

System Setting **A06/07**  
=GPS Time=

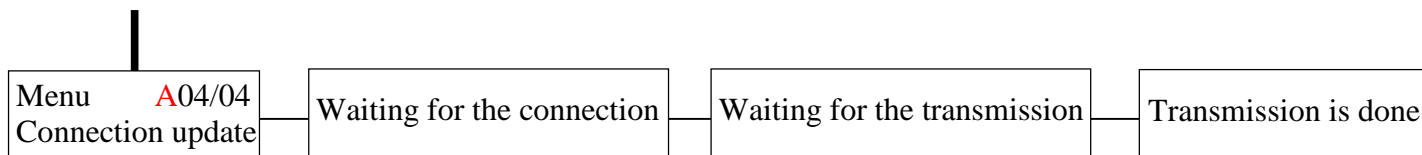
=GPS Time=  
06:55:59

GPS Synchronization  
No

System Setting **A07/07**  
GPS Synchronization

Time Zone Setting  
GMT + 08:00

GPS Synchronization  
08:00

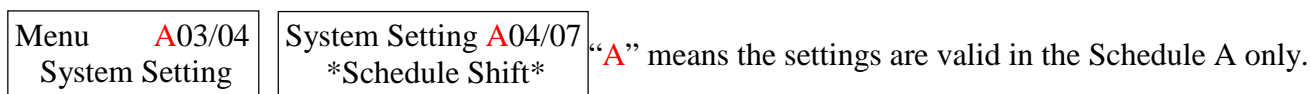


<Note>

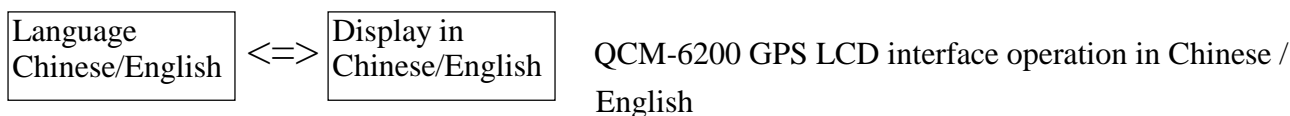
- 1) When the system starts the transmitting program, it'll detect SCHEDIT program to see if it's connecting and downloading. If the system is disconnecting for more than one minute, it'll return to the previous page. System Reset can *Shut off* the system and then turn it on.
- 2) Transmit, edit and download the schedule data via SCHEDIT.EXE tool software on PC only.

☆New Functions :

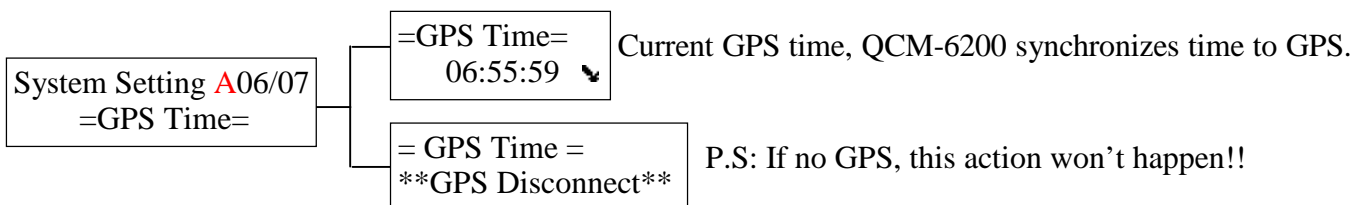
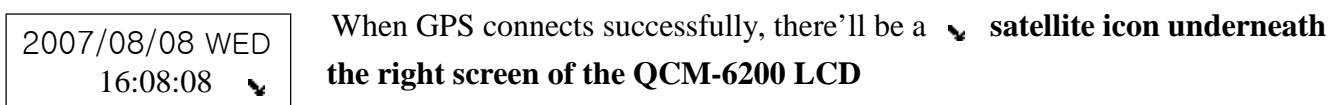
1.) Schedule Shift:



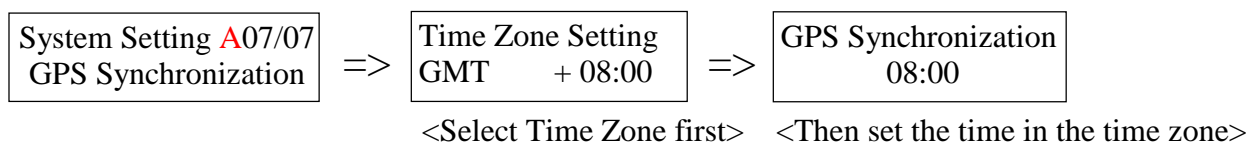
2.) Language:



3.) GPS Time:



4.) GPS Synchronization:

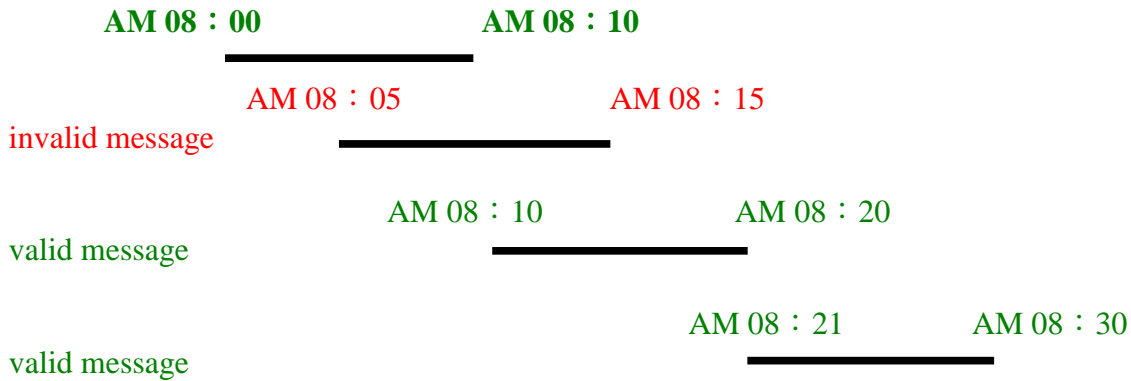


For GPS Synchronization settings, the description is as follows:

When GPS time is at 08:00 in GMT +8:00 time zone, QCM-6200 will synchronize time with GPS!!

☆Attention :

- 1.) Please do not shut off the power supply when the system is “Saving”, “Clearing” and “Transmitting”.
- 2.) When the system is in the setting mode, the function of automatic broadcast will stop, but the clock and RTCC functions work still.
- 3.) To sure the timer system can function, please check if it is in operation (in stand-by mode).
- 4.) Time setting rules for schedules (minimum unit: “minute”)



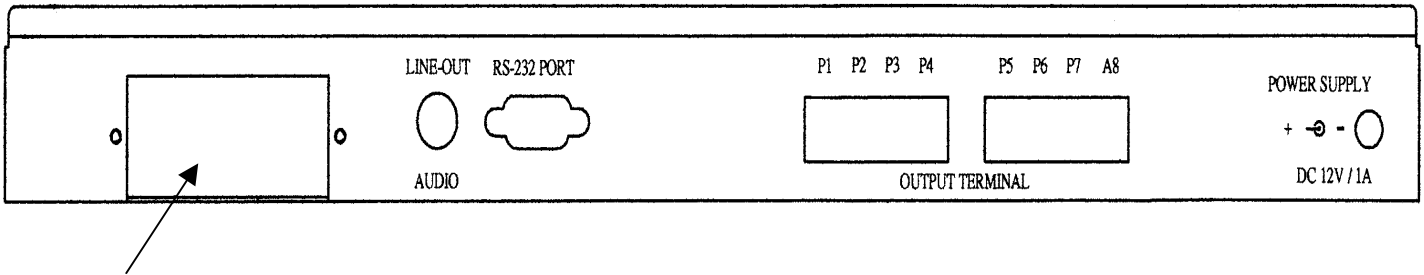
#### 1-4 Manual Operation List [Push Manual key under the standby condition]

#After the selections, press Enter to confirm. If choose “Shut off”, it’ll return to the standby mode.

- ( 1 ) Track Selection 01-99. It can play the initial tracks from 01 to 99.
- ( 2 ) Shut off !
- ( 3 ) Play track 01
- ( 4 ) Play track 02
- ( 5 ) Play track 03
- ( 6 ) Play track 04
- ( 7 ) Output channel 1
- ( 8 ) Output channel 2
- ( 9 ) Output channel 3
- (10) Output channel 4
- (11) Output channel 5
- (12) Output channel 6
- (13) Output channel 7
- (14) Turn on (All channels)!

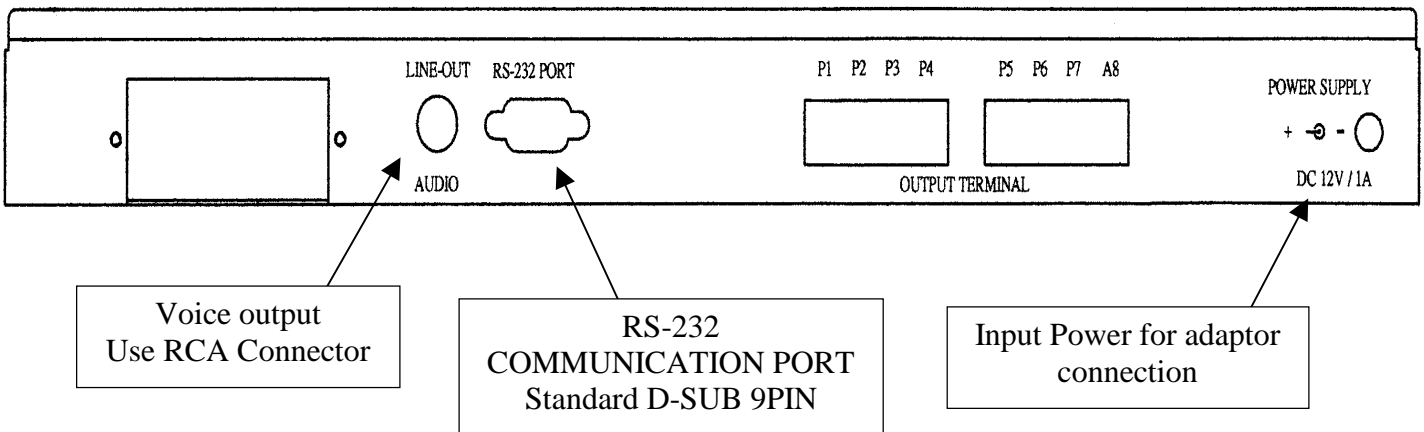
## 1-5 Back Panel Connector Illustration

(1) Leave an open square locked by a panel on the left. It can quickly unlock the panel by dismantling the screws when switch the CF CARD.

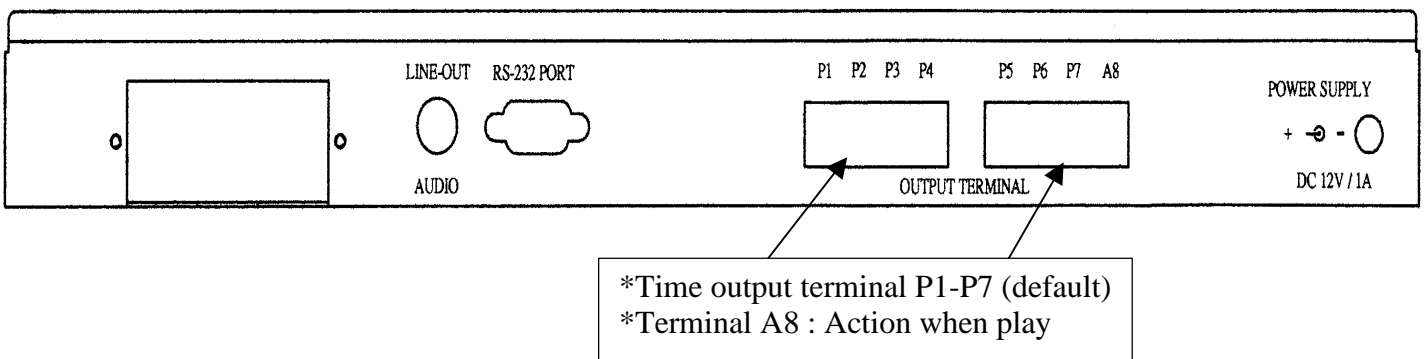


Type: CF CARD SOCKET TYPE 2  
Use EJECTOR to pop up the CF CARD.

## (2) BACK PANEL LINE-OUT / RS-232 PORT / POWER SUPPLY ILLUSTRATION



## (3) BACK PANEL CIRCUIT OUTPUT CONTROL CONNECTOR ILLUSTRATION

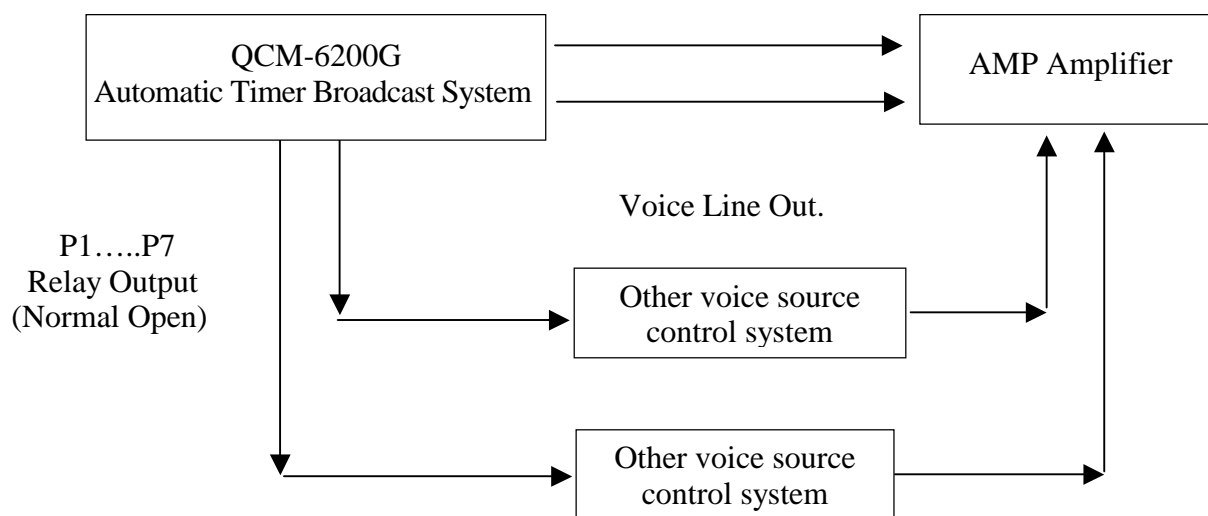


## 1-6 Accessory

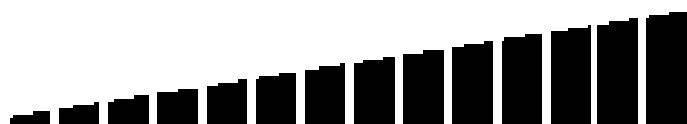
- (1) Adapter × 1 (Specification: 100~240-V, AC TO DC, 12V 1.5 A)
- (2) Fixed L shape iron for standard 19" (rack for mounting) × 2 pcs
- (3) CD-ROM × 1

## 1-7 System Functional Diagram

Output Terminal A8 (default value when play)



## 1-8 Schedule Volume Output Adjustment

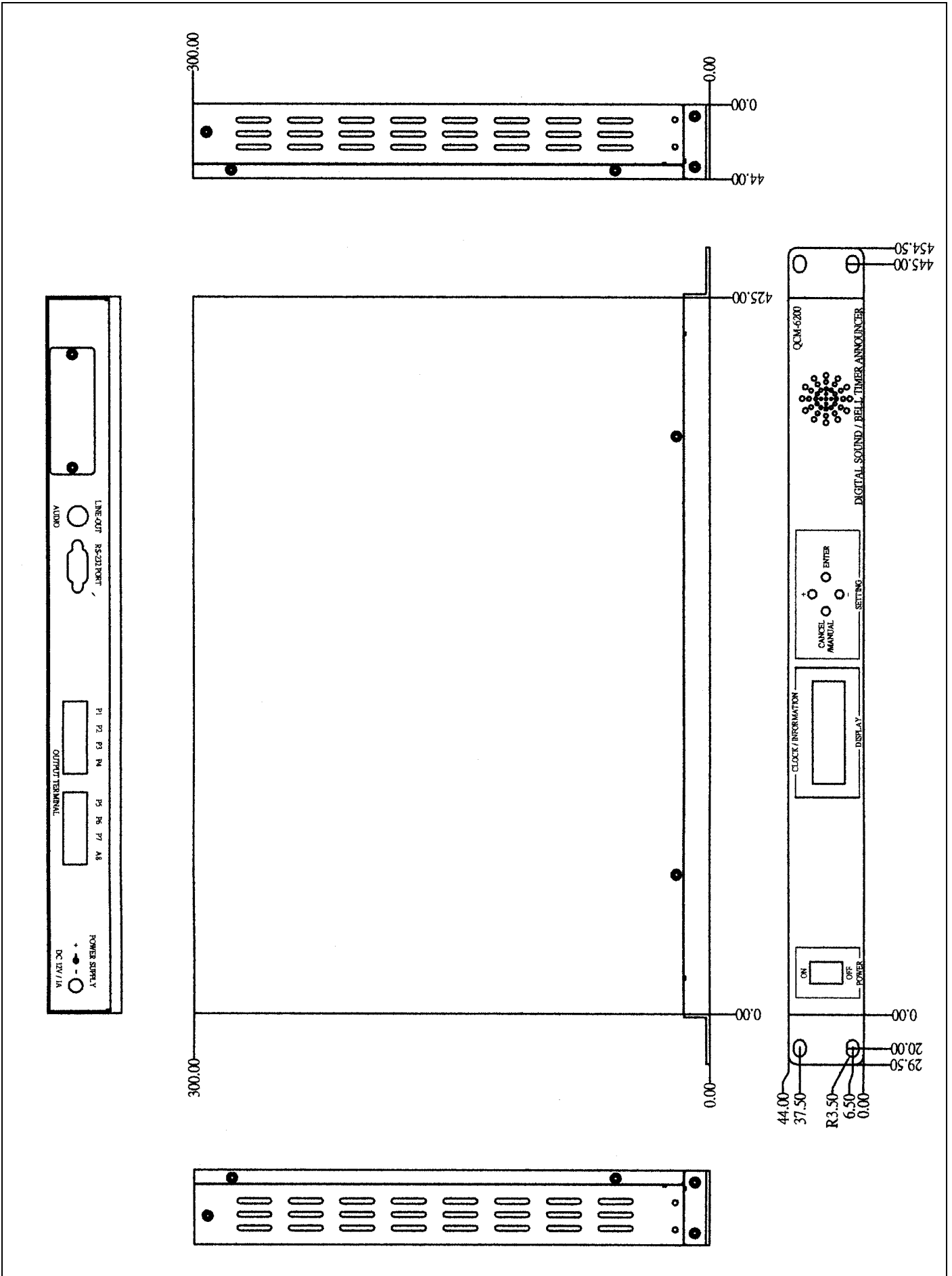


\*Up to 14 degrees

0 = -78 db	1 = -8 db	2 = -7 db	3 = -6 db	4 = -5 db	5 = -4 db	6 = -3 db
7 = -2 db	8 = -1 db	9 = 0 db	10 = +1 db	11 = +2 db	12 = +3 db	13 = +4 db
14 = +5 db						

\* Default value is 9<sup>th</sup> degree (0 db).

# 1-9 Metal Box Dimension Illustration

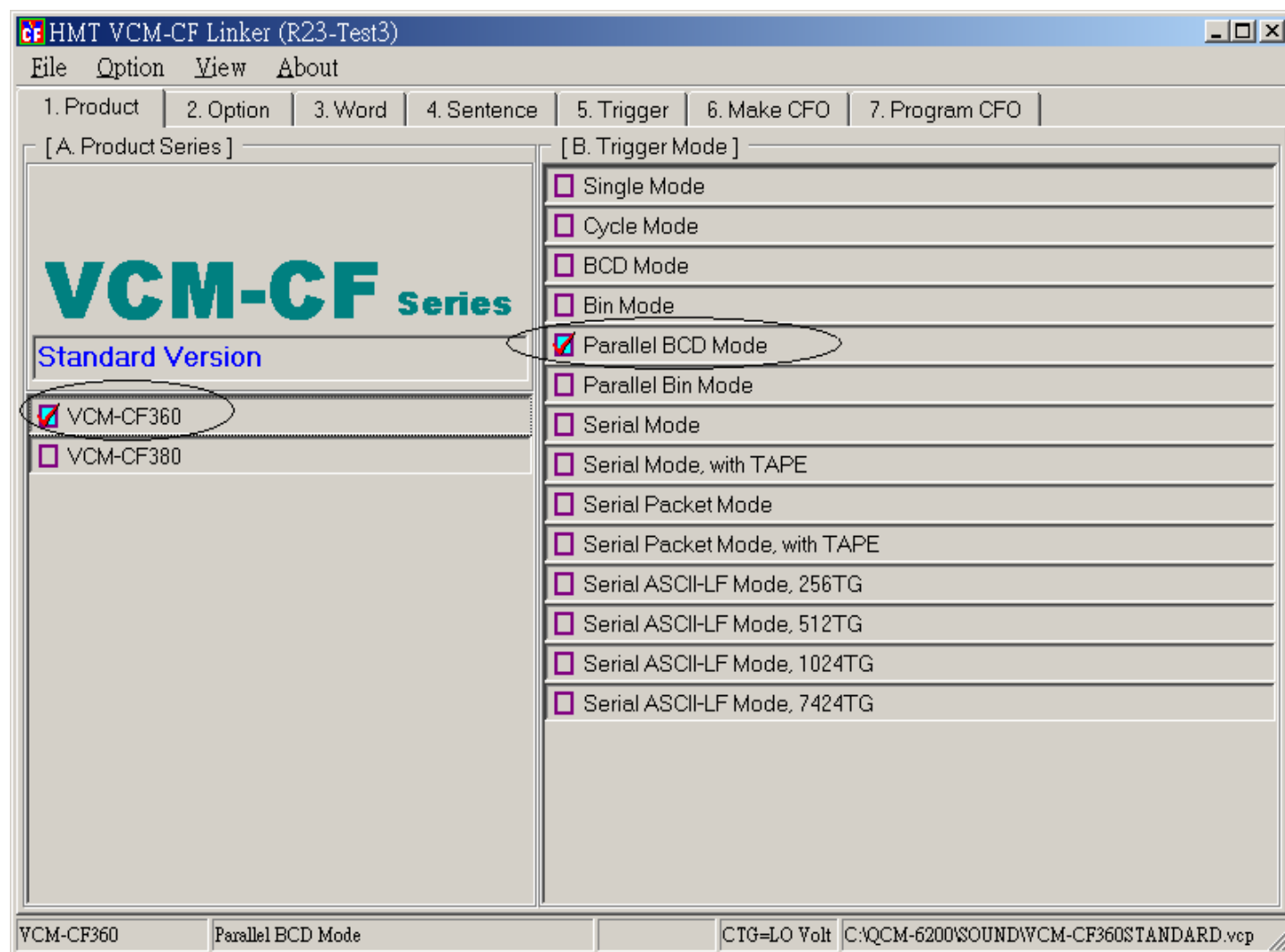


# VCM-SERIES Digital Voice Module Tool Software

## \*\*\*CF LINKER Tool Software Instructions\*\*\*

QCM-6200 is built-in 6 melodies and equipped with VCM-CF360 voice module. Via CF LINKER tool software, users can add new voice files by restoring them before making the ROM file and arrange the schedules via the LCD front panel. Clone the catalogue from the CD-ROM to hard disk C. Then load the setting file, *VCM-CF360 STANDARD.VCP*. Follow the steps below to edit and update the QCM-6200G.

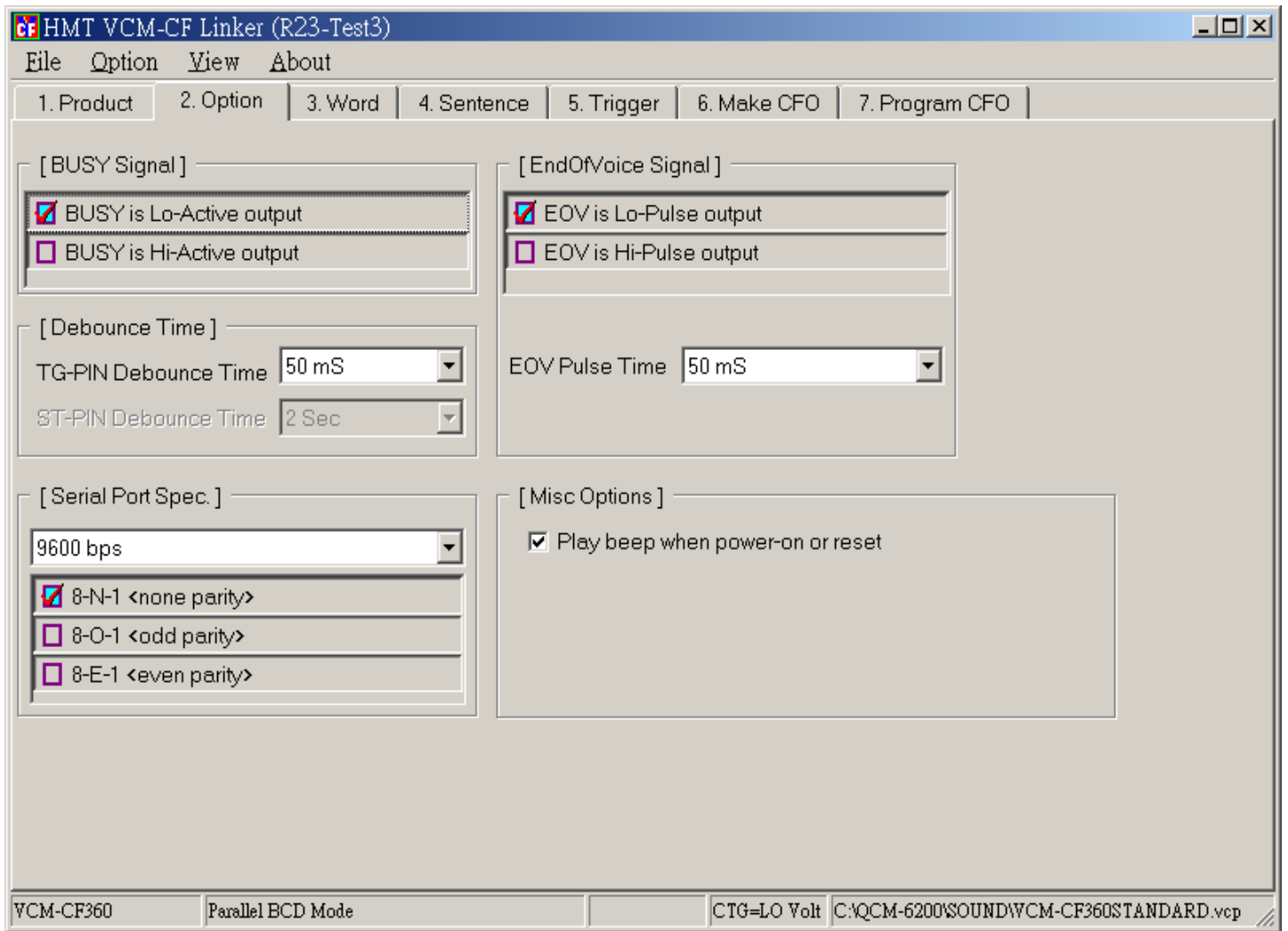
### 2-1-1 Selections for Product Series and Trigger Mode



\*Product Series : Tick "VCM-CF360"

\*Trigger Mode : Tick "Parallel BCD Mode"

## 2-1-2 Option Setting



“Operation” can leave unchanged.

## 2-1-3 Voice Source File Setting

Double click on the TWV file or WAV file to place the selected file(s) to the Word Form below. When the selected file is in a WAV format, it'll be transformed into a TWV format automatically.

Word No	F	TWV filename	S.R	CH	BIT	Sec.	Alias name
W0000	?						
W0001	✓	C:\QCM-6200\SOUND\BELL-1-22SEC.twv	44K	1	16	21.5	鐘聲1-44k16
W0002	✓	C:\QCM-6200\SOUND\BELL-2-48SEC.twv	44K	1	16	48.1	鐘聲2-44k16
W0003	✓	C:\QCM-6200\SOUND\BELL-3-45SEC.twv	44K	1	16	44.7	鐘聲3-44k16
W0004	✓	C:\QCM-6200\SOUND\BELL-4-11SEC.twv	44K	1	16	10.2	鐘聲4-44k16
W0005	✓	C:\QCM-6200\SOUND\BELL-5-19SEC.twv	16K	1	8	19.4	BELL-5-19SEC
W0006	✓	C:\QCM-6200\SOUND\BELL-6-26SEC.twv	16K	1	8	25.8	BELL-6-26SEC
W0007	?						
W0008	?						
W0009	?						

\*Six melodies are set initially. For mixing a new file with the initial voice files, please save the initial files in the correct Path or a new set-up root.



Play the selected voice file (Word file)



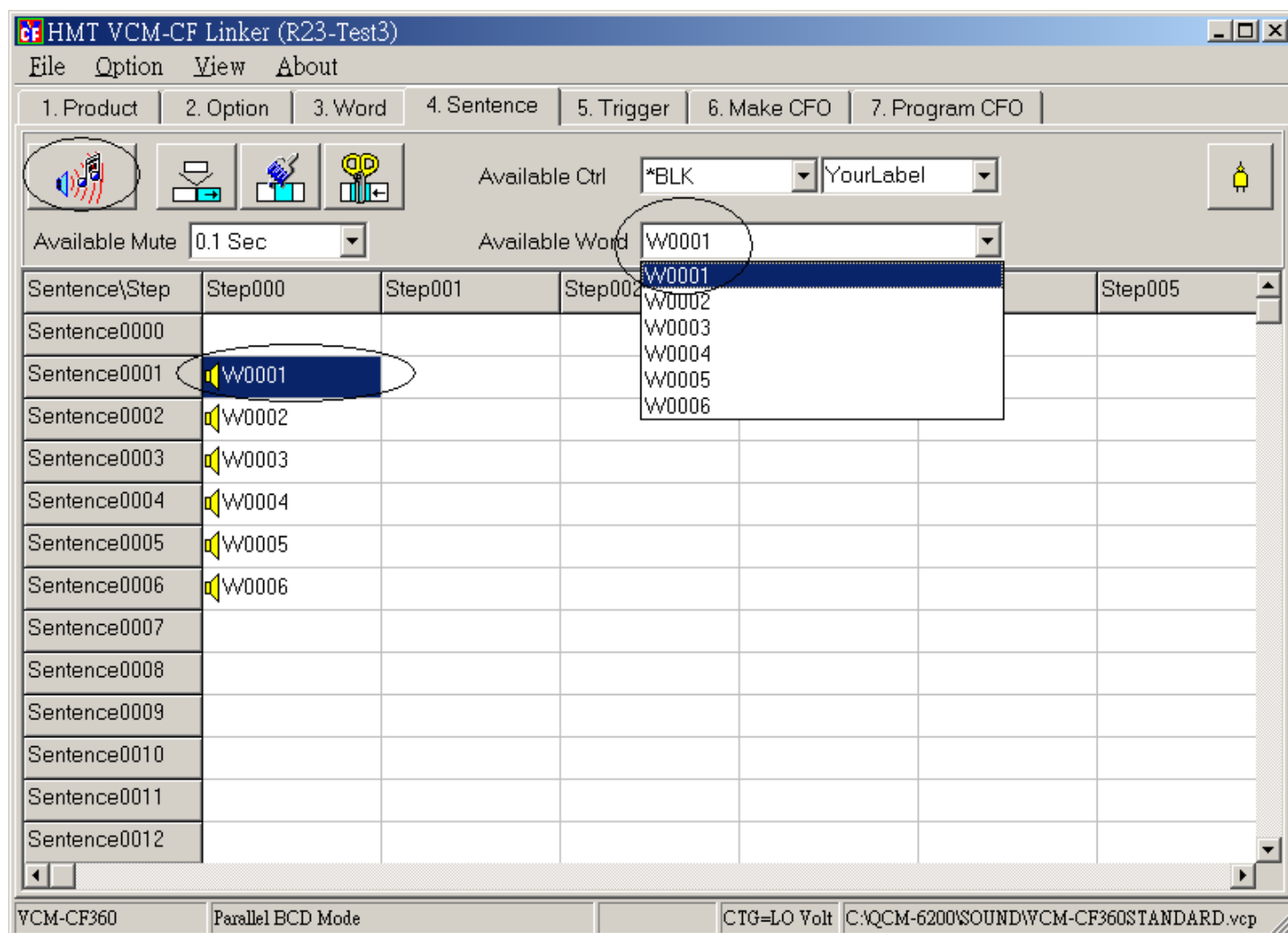
Clear the selected voice file (Word file)



Clear all voice files (Word files)

## 2-1-4 Sentence Arrangement

The content in each Sentence can be composed of Available Word or Mute.



\*\*By using **Available Word** pull-down menu, you can select a Word file and place it in the Sentence-Step. Or double click in the Sentence-Step, the Available Word option list will appear. The WORD file only takes up the memory for the first use. Keeping placing the same WORD file in sentences won't take up any memory again.

### [Attention]

The selected Word file only appears on the Available Word pull-down menu under the operation [3.Word] list.



Play Sentence



Insert a STEP



Clear a STEP



Delete a STEP



Arrange a control order (Optional in this system)

### Available Mute Menu:

Insert a Mute in the Sentence-Step. The mute won't take up the memory.

There are 25 units to be composed of. (Mute Unit: Minimum is 0.1sec. Maximum is 30sec)

Please see the illustration below:

The screenshot shows the HMT VCM-CF Linker (R20) software interface. The main window has a menu bar (File, Option, View, About) and a toolbar with icons for file operations and a bell icon. Below the toolbar, there are tabs for project stages: 1. Product, 2. Option, 3. Word, 4. Sentence, 5. Trigger, 6. Make CFO, and 7. Program CFO. The 'Sentence' tab is active.

At the top of the workspace, there are two dropdown menus: 'Available Ctrl' set to '\*BLK' and 'YourLabel' set to 'YourLabel', and 'Available Mute' set to '1 Sec' and 'Available Word' set to 'W0000'. A bell icon is also present on the right.

The main workspace contains a table with columns for 'Sentence\Step' and five steps (Step001 to Step005). The 'Sentence\Step' column lists sentences from Sentence0000 to Sentence0013. Sentence0000 is expanded to show a list of available mute durations: 0.8 Sec, 0.9 Sec, 1 Sec (highlighted), 2 Sec, 3 Sec, 4 Sec, 5 Sec, 6 Sec, 7 Sec, 8 Sec, 9 Sec, 10 Sec, 15 Sec, 20 Sec, 25 Sec, and 30 Sec. The 'Step001' column shows a 'M1.0Sec' mute unit in the first row. Sentences 0009 and 0010 show a speaker icon and the word 'W0004' and 'W0000' respectively. Sentences 0011 through 0013 are empty.

At the bottom of the window, there is a status bar with the following information: VCM-CF380, BIN 8bit Mode, with RTCC, STG=LO Volt, CTG=LO Volt, and C:\sound\myproject.vcp.

## 2-1-5 Trigger – Arrange a Sentence Code

Available Sentence TG-Attrib : [L/E] [U/H] [N/I]  
 (E) Edge (H) Hold (I) Interruptible  
 (L) Level (U) Unhold (N) Non-interruptible

Input Name	Inp	G Code	L/E	U/H	N/I	Sentence Code
X7..X0	11111110	CTG 01H	Edge	Unhold	N-Interrupt	S0001
X7..X0	11111101	CTG 02H	Edge	Unhold	N-Interrupt	S0002
X7..X0	11111100	CTG 03H	Edge	Unhold	N-Interrupt	S0003
X7..X0	11111011	CTG 04H	Edge	Unhold	N-Interrupt	S0004
X7..X0	11111010	CTG 05H	Edge	Unhold	N-Interrupt	S0005
X7..X0	11111001	CTG 06H	Edge	Unhold	N-Interrupt	S0006
X7..X0	11111000	CTG 07H	Edge	Unhold	N-Interrupt	
X7..X0	11110111	CTG 08H	Edge	Unhold	N-Interrupt	
X7..X0	11110110	CTG 09H	Edge	Unhold	N-Interrupt	
X7..X0	11101111	CTG 10H	Edge	Unhold	N-Interrupt	
X7..X0	11101110	CTG 11H	Edge	Unhold	N-Interrupt	
X7..X0	11101101	CTG 12H	Edge	Unhold	N-Interrupt	
X7..X0	11101100	CTG 13H	Edge	Unhold	N-Interrupt	

VCM-CF360 Parallel BCD Mode CTG=LO Volt C:\QCM-6200\SOUND\VCM-CF360STANDARD.vcp

\*\* QCM-6200 Microprocessor Automatic Timer Broadcast System applies BCD code for up to 99 tracks. From the setting list, the NO.1 – 99 correspond to the “1 - 99” on the LCD front panel. Six melodies “1 – 6” are built in the CF CARD already. “7 – 99 “ are free to be arranged other SENTENCE CODES.

\*\*\* Attribute setting follows the default value under the file-VCM-CF360 STANDARD.VCP \*\*\*  
 As the picture shown above.

Other function keys:



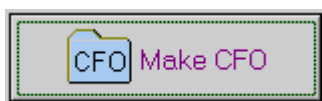
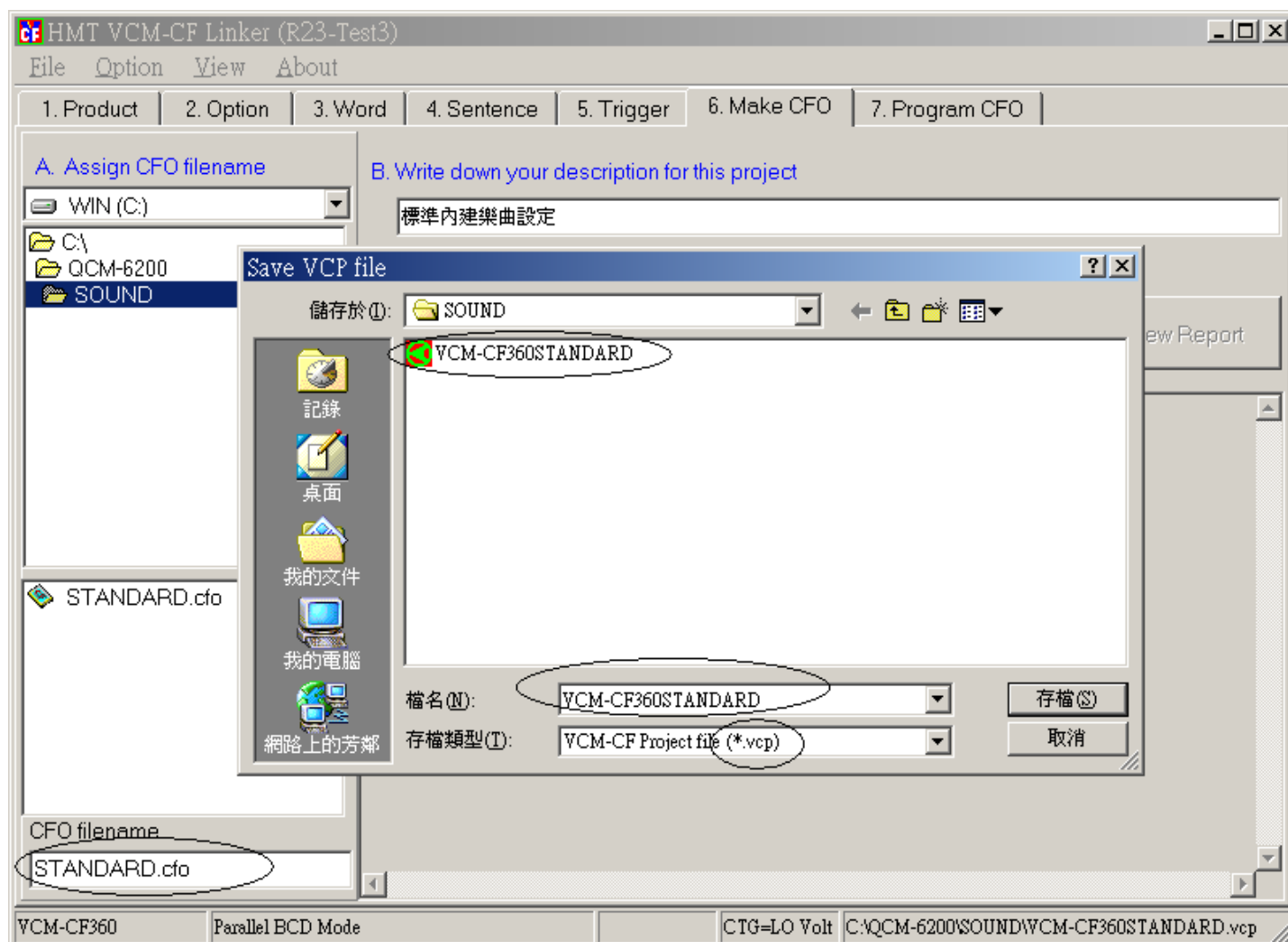
Play the selected Sentence Code



Delete the selected Sentence Code

## 2-1-6 Make CFO File

Before clicking on “Make CFO”, we here remind users to save the new files in advanced.  
(Shown in the illustration below)  
If files are revised, please load the Setting Files again.



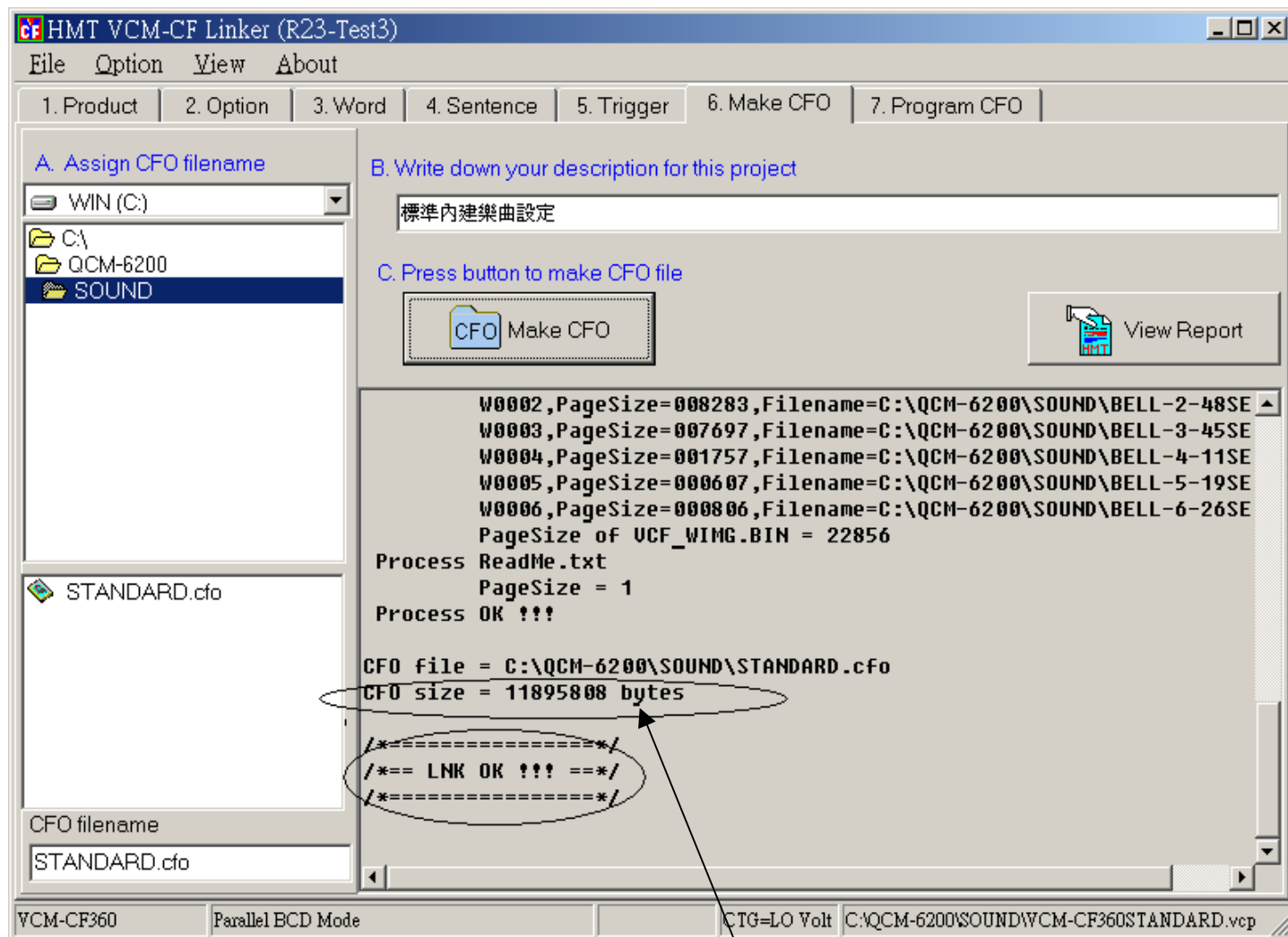
Operate the function to produce CFO file

The extension name for VCM-CF is “.VCP”.

The picture below means the CFO file is done. Users will see “CFO size = xxxxxx bytes” in the report. It means how much storage is needed in a CF card. (1MegaByte=1048576 bytes)

[Warning!!]

The storage data in a CF card must have a larger capacity than it on the report.



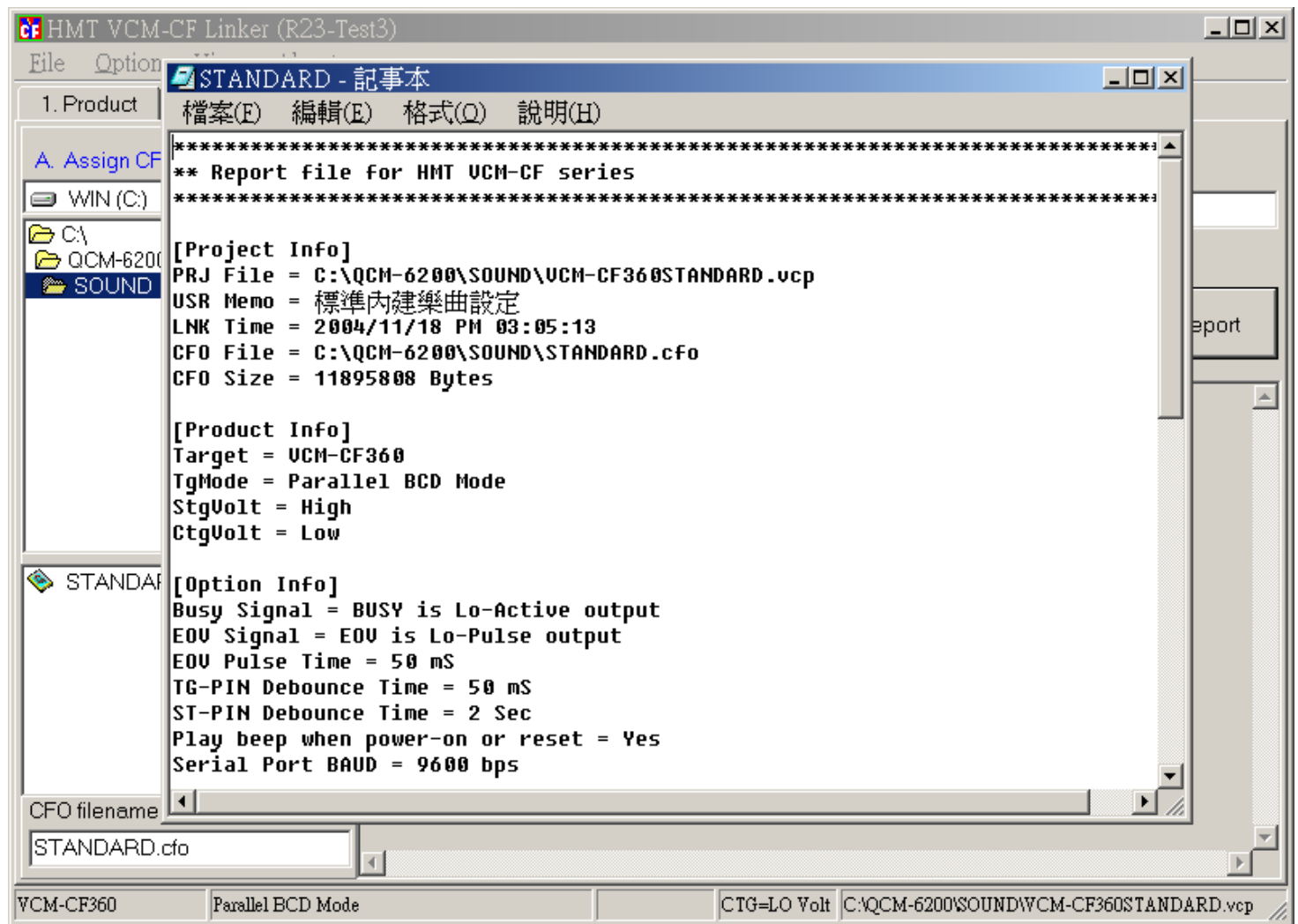
\*\*\*In this case, it needs at least 16MB CF CARD to save the CFO file\*\*\*  
[QCM-6200 Standard equipment is 64 MB]



Check the report

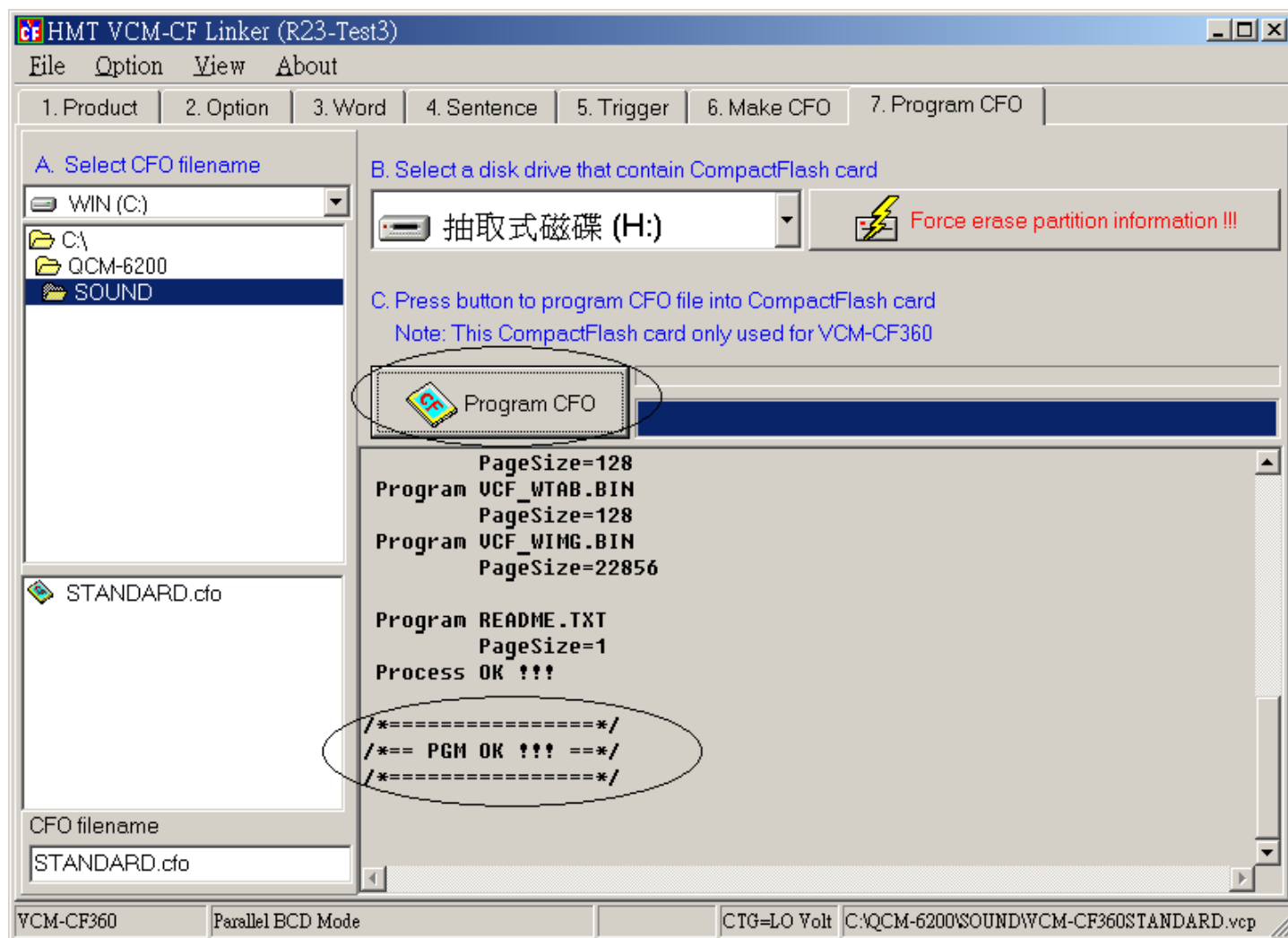
This STANDARD.CFO file can be found from [7. PROGRAM CFO] list and it needs to be downloaded to the file in CF CARD.

Click on "View Report" and it'll show the related information about this setting.



## 2-1-7 Program CFO

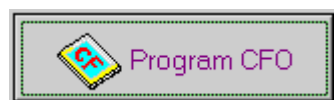
Select the number of the CF Reader. Then click on “Program CFO” to start programming. Write the CFO file into CF memory card. When a mistake is found, click on “Force erase partition information”. Then clear the content from the CF card.



[Warning!!] It's a must to use this program to download the information from CFO to CF memory card. *Do not just copy the file as what we do to other files on the computer operation!!!*



Clear partition information from CF memory card



Start to download the information from CFO to CF memory card

When the download is finished, plug the CF CARD back to VCM-CF360 VOICE MODULE. Follow the commands from the LCD front panel to set the schedules.

## 2-1-8 VCM-CF Series Malfunction Alarm

Long beep	Short beep	Management
5	3	The chipboard is out of function. Please send back to repair.
4	3	Please check if CF Memory Card is off or there's no CF Memory Card inside.
3	3	CF Memory Card content is wrong. Please restore the content.
2	3	CF Memory Card content is wrong. Please restore the content.
1	3	CF Memory Card content is wrong. Please restore the content.
3	4	CF Memory Card content is wrong. Please restore the content.
2	4	CF Memory Card content is wrong. Please restore the content.
1	4	CF Memory Card content is wrong. Please restore the content.

Warning!! The content of CF Memory Card has to be written via the program- 7.Program CFO from VCM-CF Link. Do not clone files and write other files by any other ways!!

## 2-1-9 VCM-CF Series Storage Voice Length Measurement

### 1. 8 BITS

CF CARD capacity X 1024KB / sampling rate = ??? seconds

Ex : CF CARD 256MB applies 44.1KHZ, 8BITS

$$256 \text{ X } 1024\text{KB} / 44.1\text{K} = 5944 \text{ seconds}$$

\*\*\*The datum in red means different capacity of CF CARD and different sampling rate. These two factors will affect the length of the storage. \*\*\*

### 2. 16 BITS

CF CARD capacity X 1024KB / sampling rate = ??? seconds (8BITS) / 2 = ??? seconds (16BITS)

Ex : CF CARD 256MB applies 44.1KHZ, 16BITS

$$256 \text{ X } 1024\text{KB} / 44.1\text{K} = 5944 \text{ seconds (8BITS)} / 2 = 2972 \text{ seconds (16BITS)}$$

\*\*The length measurement of voice needs to deduct the memory taken by the header of CF- CARD firstly.

# VCM-SERIES Digital Voice Module Tool Software

\*\*\*TRUEWAVE Voice Edit Software Instructions\*\*\*

## TrueWave Voice Edit Software Instruction:

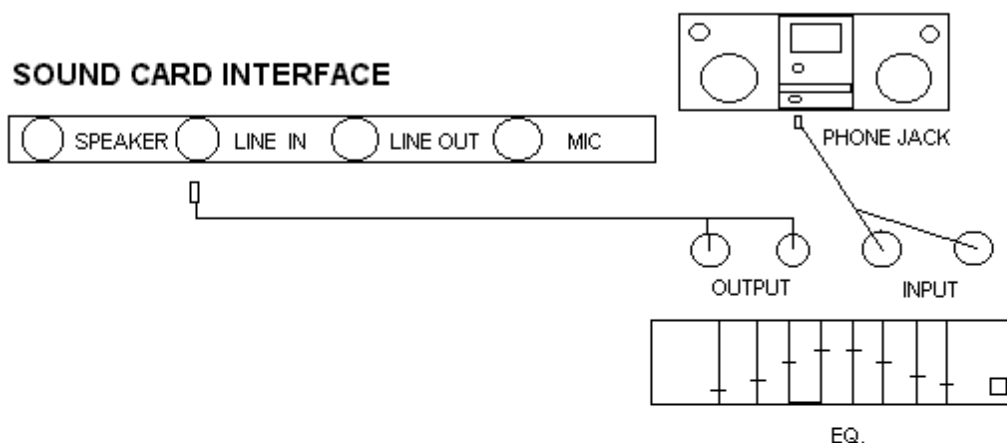
### 2-2-1 Voice sources can be obtained from 5 types of methods below:

1. Use the stereo-set recording voice to the cassette via the playback machine, equalizer (EQ). Connect the audio wire to the sound-card interface at “line-in”. See diagram(A).
2. Connect to the PC, record the voice source directly via the microphone. See Diagram (B).
3. Record from the AUDIO-CD via the computer programs.
4. Translate the AUDIO-CD into WAV file via the translation programming.
5. If the voice source is a voc file, load the voc file from the FILE menu in this software and save the voc file. It'll be translated into TWV file automatically.

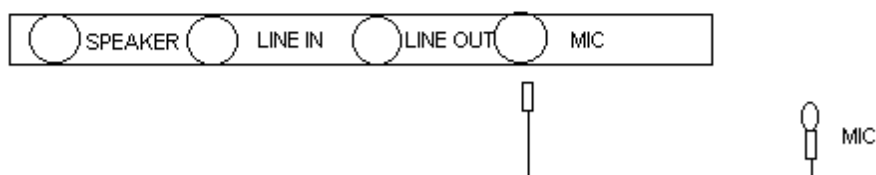
### #Attention :

- Before recording, use the mixer software from the Sound Card to adjust the volume. Then LINE IN or MIC. Or turn on the CD
- When use the microphone from PC, please close to the microphone and avoid “noises”. Speak louder enough. Do not adjust the position of the microphone or the noises will happen during the recording ◦

(A)

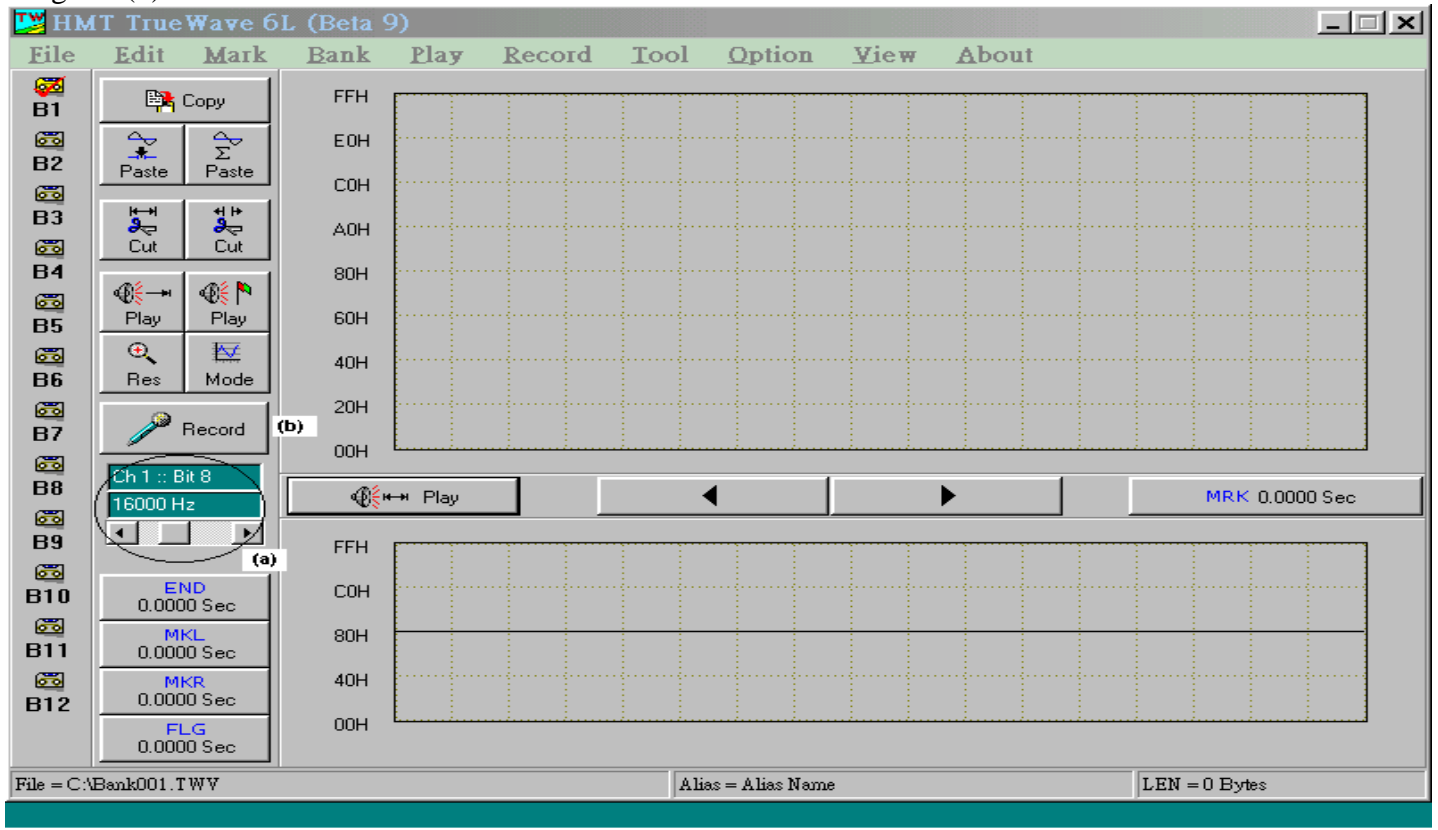


(B)



\*The following is the example of the voice source from TAPE or CD player via PC:

Diagram (1)



Step 1 : Check the connection between computer and playback equipment.

Step 2 : Edit via TrueWave software to proceed voice recording and editing.

## 2-2-2 Voice Record

Step 3 : Select the sampling rate. Please see (a) in diagram (1).

Step 4 : 1.Left click on "Record" button such as (b) in diagram (1).

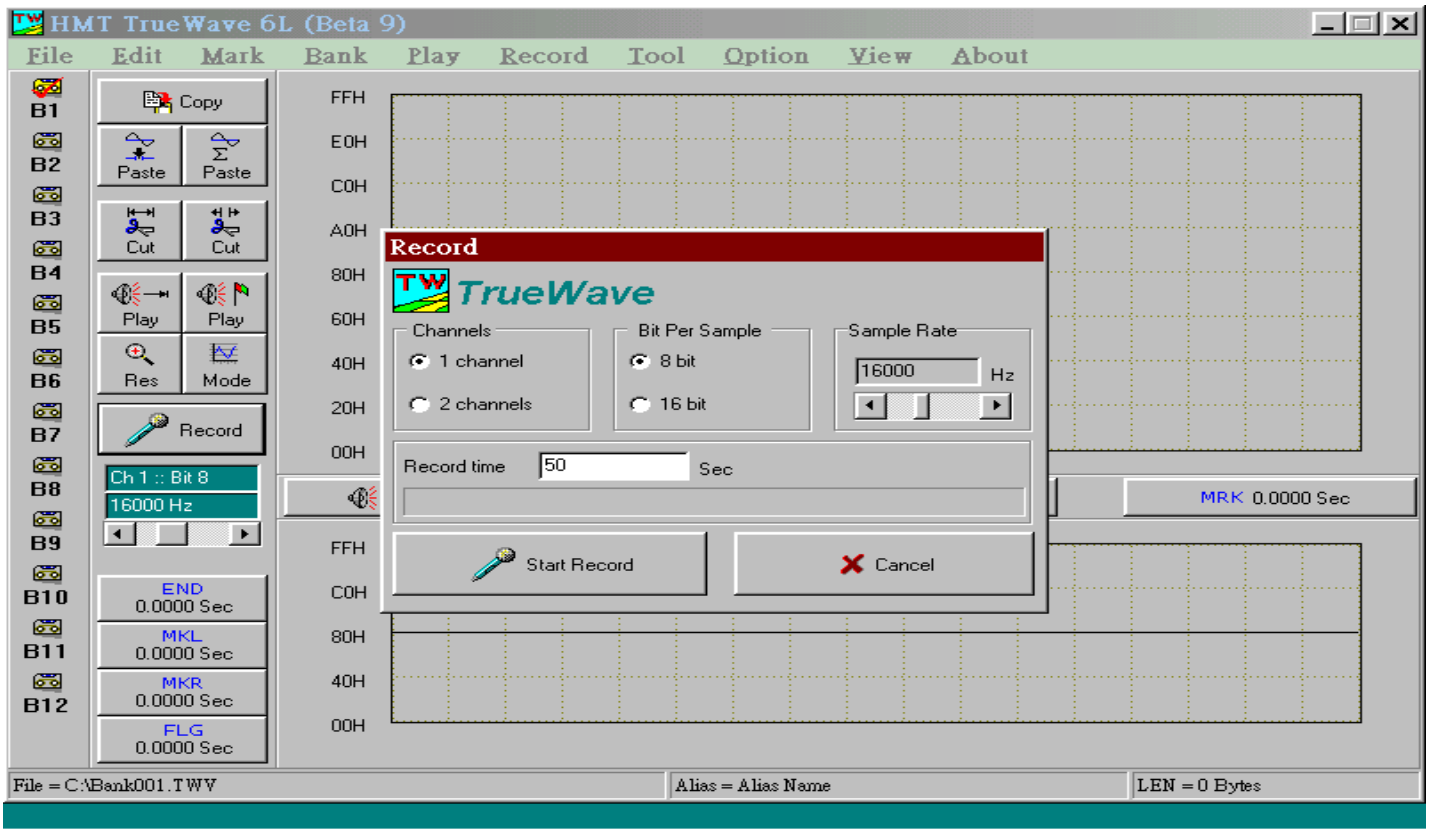
2.Then "Record" window appears. See diagram (2). Enter the length of the recording time (XX seconds). This example is 50 seconds long.

Step 5 : Record a period of mute first. If any noises are found, please remove them and then go to the next step.

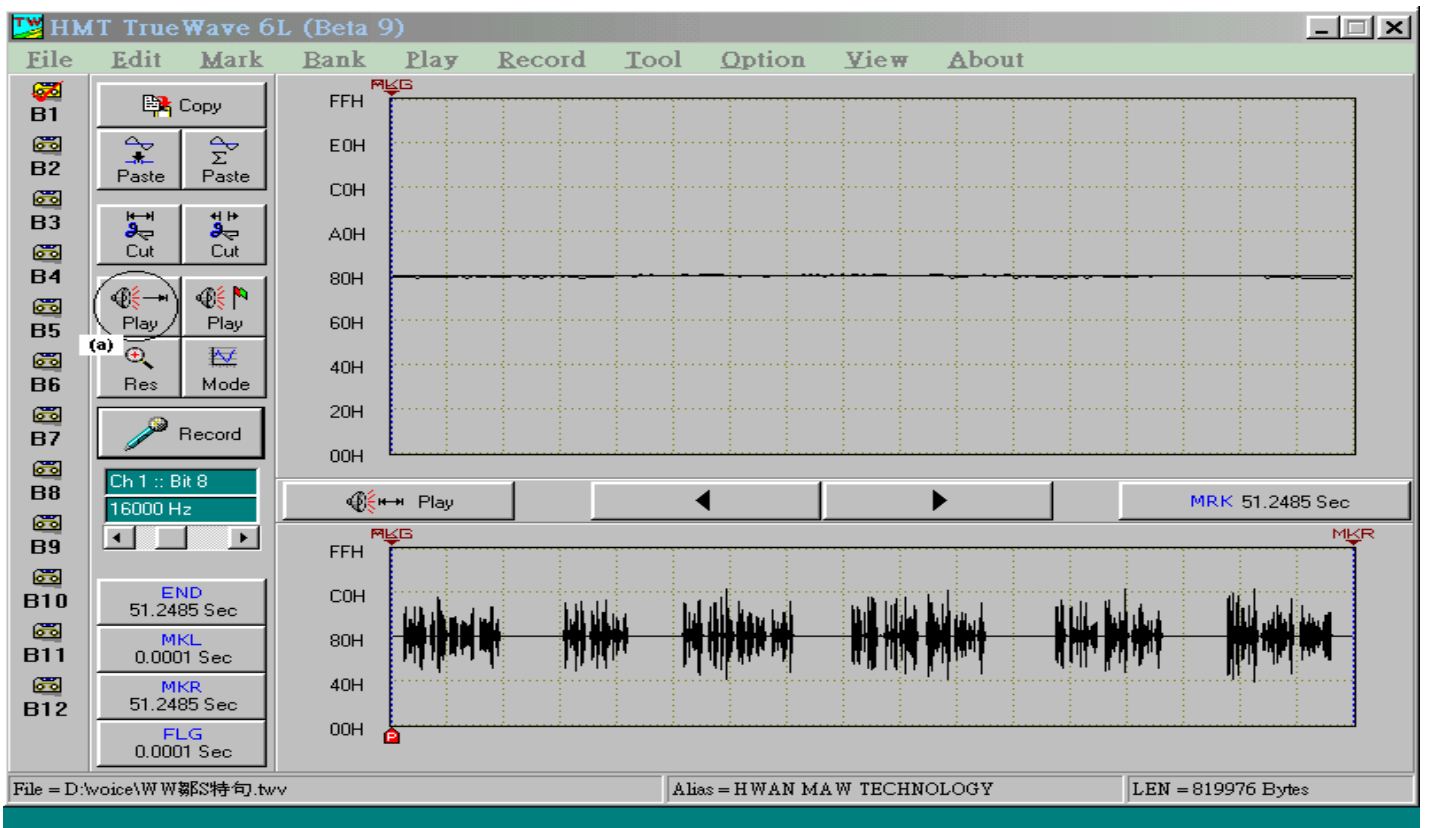
Step 6 : Click on "Start Record " and then click on "PLAY" key. The voice source will be recorded onto the computer. In Diagram (3). "ESC "key can stop recording. Click on (a) to hear the voice source.

**[Note] After the voice source recording, users can edit the files in the "Bank"s (B1~B12).**

Diagram(2)

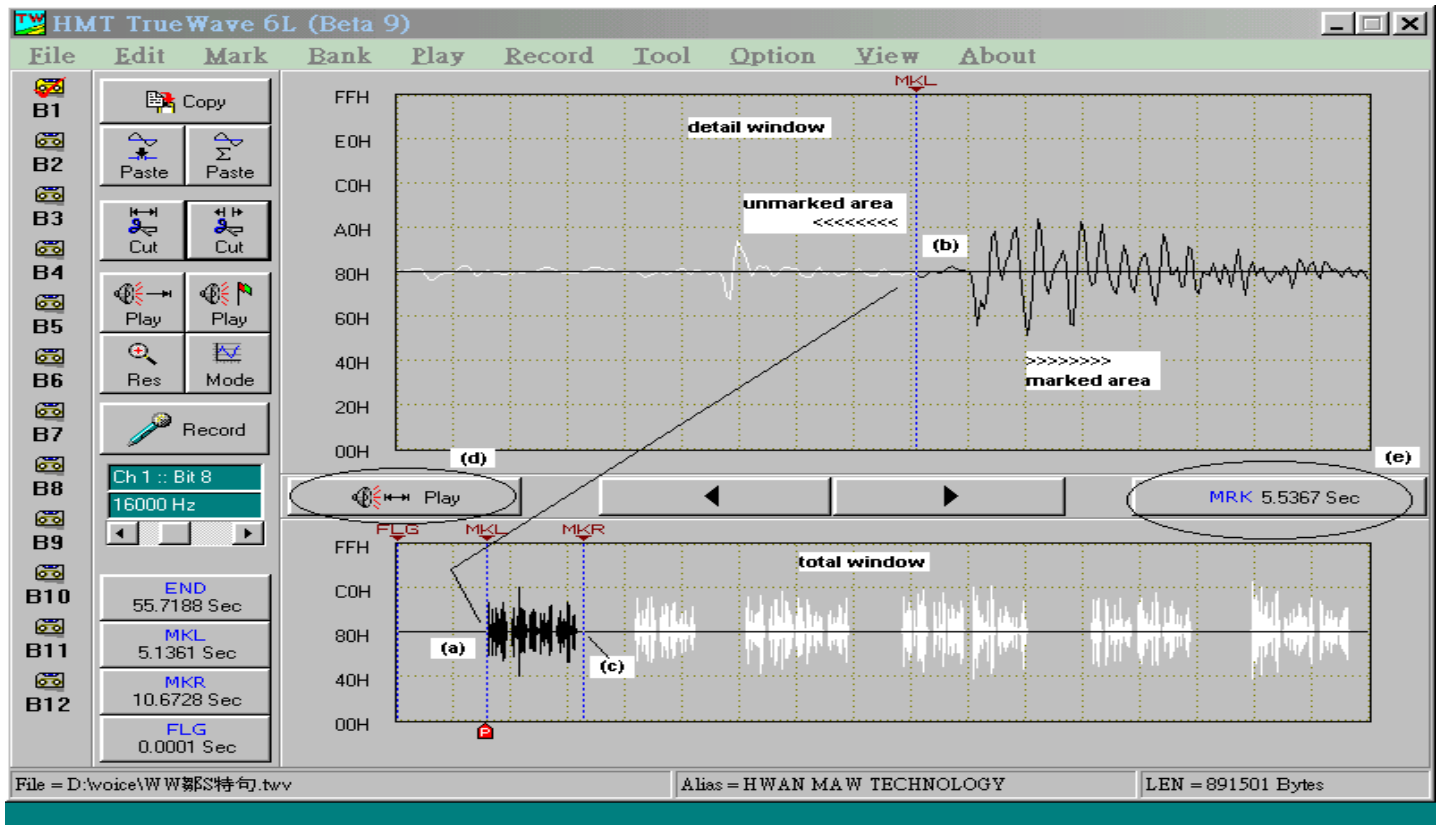


Diagram(3)



## 2-2-3 Voice Edit

Diagram (4)



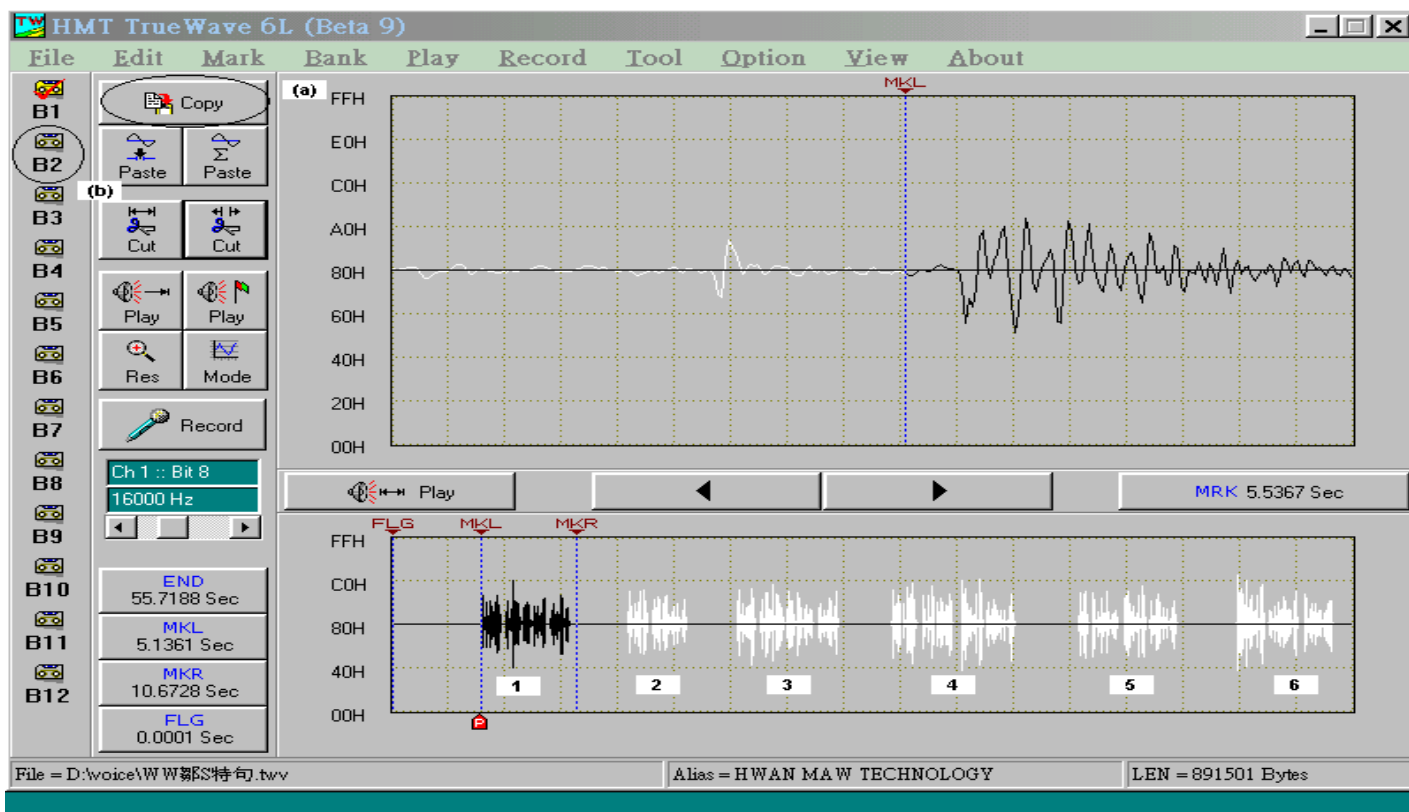
Step7 : This step is to mark a single segment for a copy and save it to edit in the other Bank.

(Please refer to Step8 for copy)

### 1. Marked method:

- 1) See the diagram (4). Left click on (a) at "Total Window". Then, the "Detail Window" will display the wave-micro lines. At (b), left click, the left part of voice wave on the detail window will be shown in white waves. The white ones mean "unmarked area".
- 2) Vice versa. Left click on (c) at "Total Window". The "Detail Window" displays the wave-micro lines. And then right click on the Detail Window, the right half part will change into white lines. The white ones mean "unmarked area". The black wave line is "marked area". Able to use the black wave line as a copy to place into other banks for editing.
2. In Diagram (4), (d), click on (d) button to play the marked area. In this example, users can hear the edited voice sentence.
3. If the marking procedure doesn't work well, you can click on " mark all " button (in diagram (4)- (e)) for re-editing.

Diagram (5)



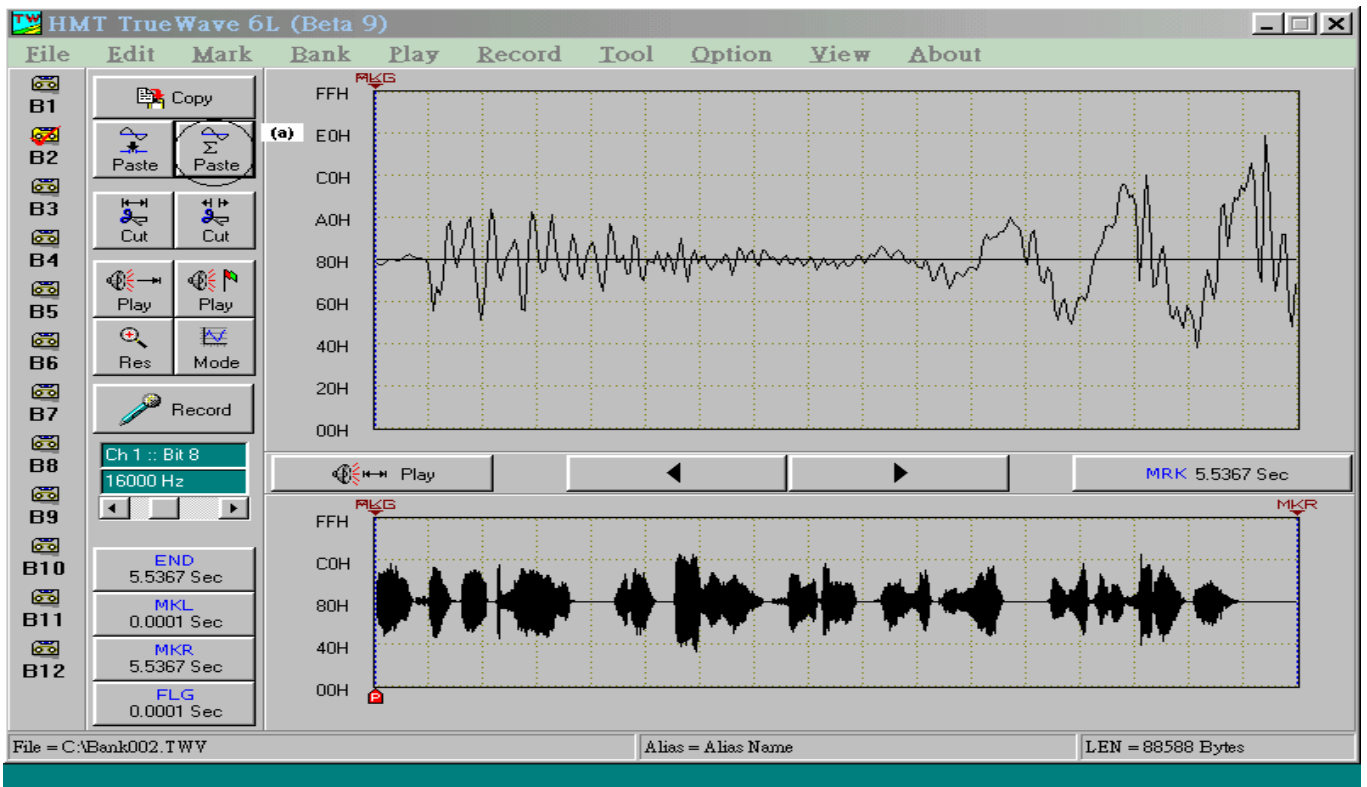
## 2-2-4 Sentence Copy

Step 8 : Copy the marked area to edit in other banks

(This example is to copy the voice sentence from Bank1, and then to place it in Bank2 for editing and saving files.)

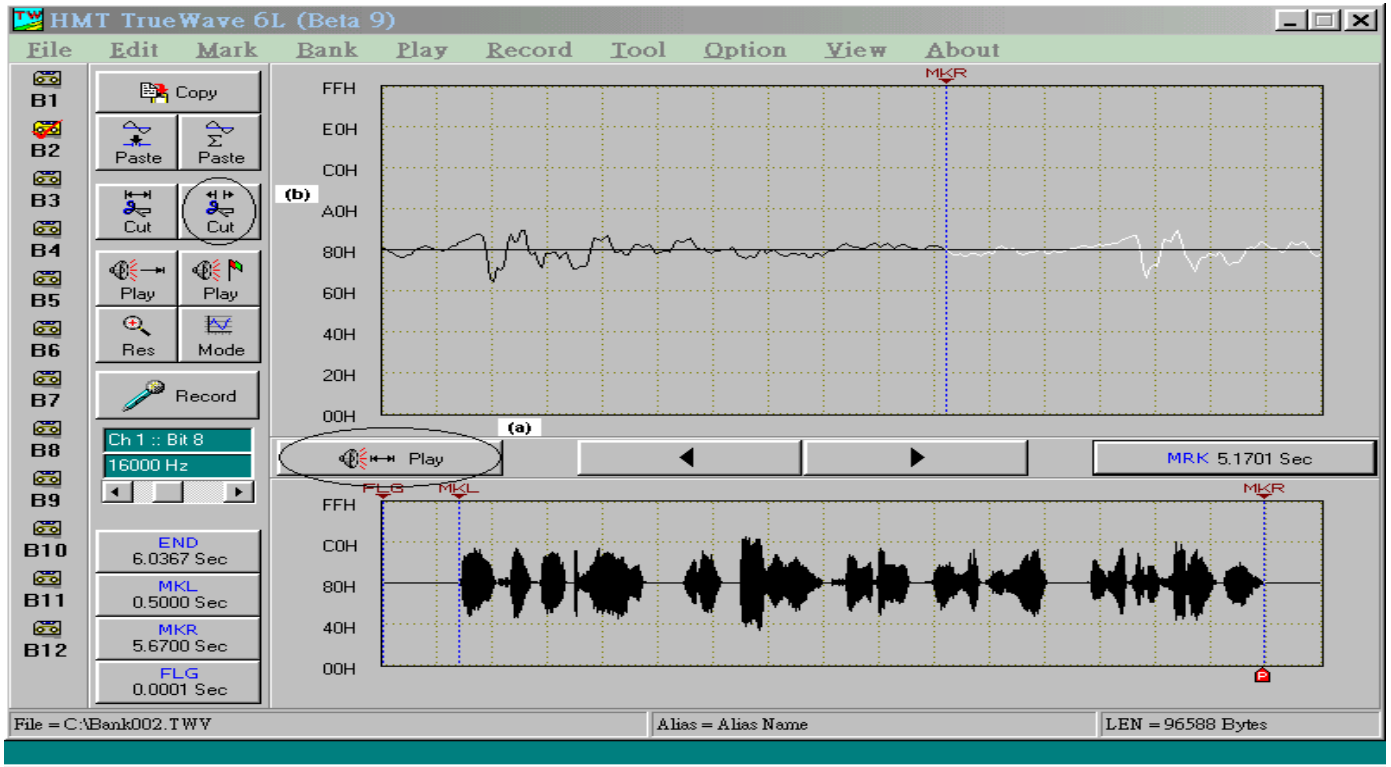
1. To click on “Copy “ button - (a) on the diagram (5).
2. To click on “B2” button - (b) on the diagram (5). Select a Bank. (This example is Bank 2). Then, users can edit a new voice in Bank2, a blank edit zone.

Diagram (6)



3. Click on "Paste" button - (a) on the diagram (6).  
The copy of No.1 voice sentence will be put in Bank 2.  
Click on the "Play" button to hear the voice.

Diagram (7)



## 2-2-5 Sentence Editing

Step 9 : Sentence Editing (refer to diagram(7))

1. Use the marked method to mark the range of the preferred section from the voice source.
2. Click on "Play(play marked area)" button - (a), for voice check.
3. If the sounds perform well, click on "Cut(cut unmarked area)" button - (b). The voice will be trimmed like this in the diagram (8).

\* In diagram(8) below, the No.1 voice sentence is done.

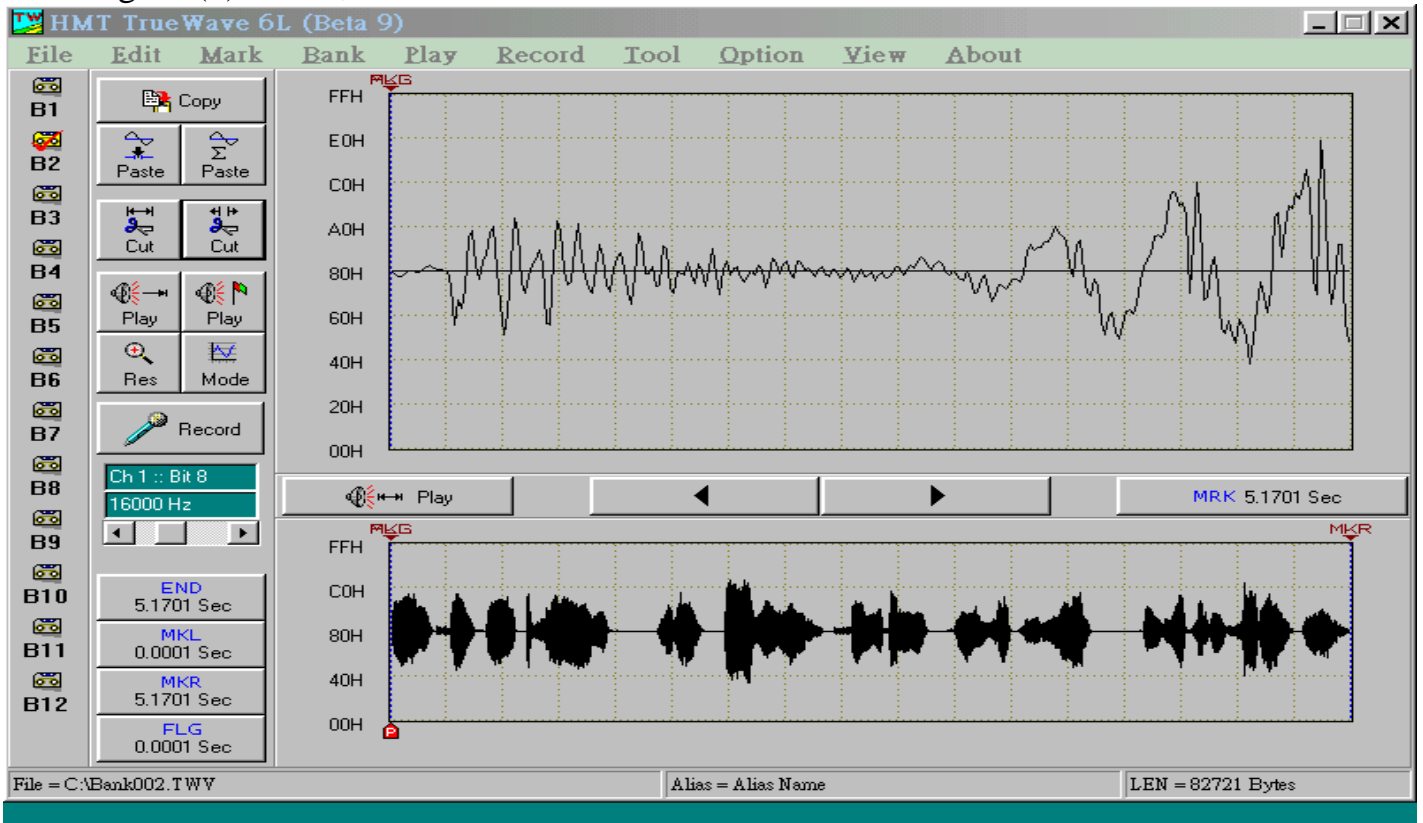
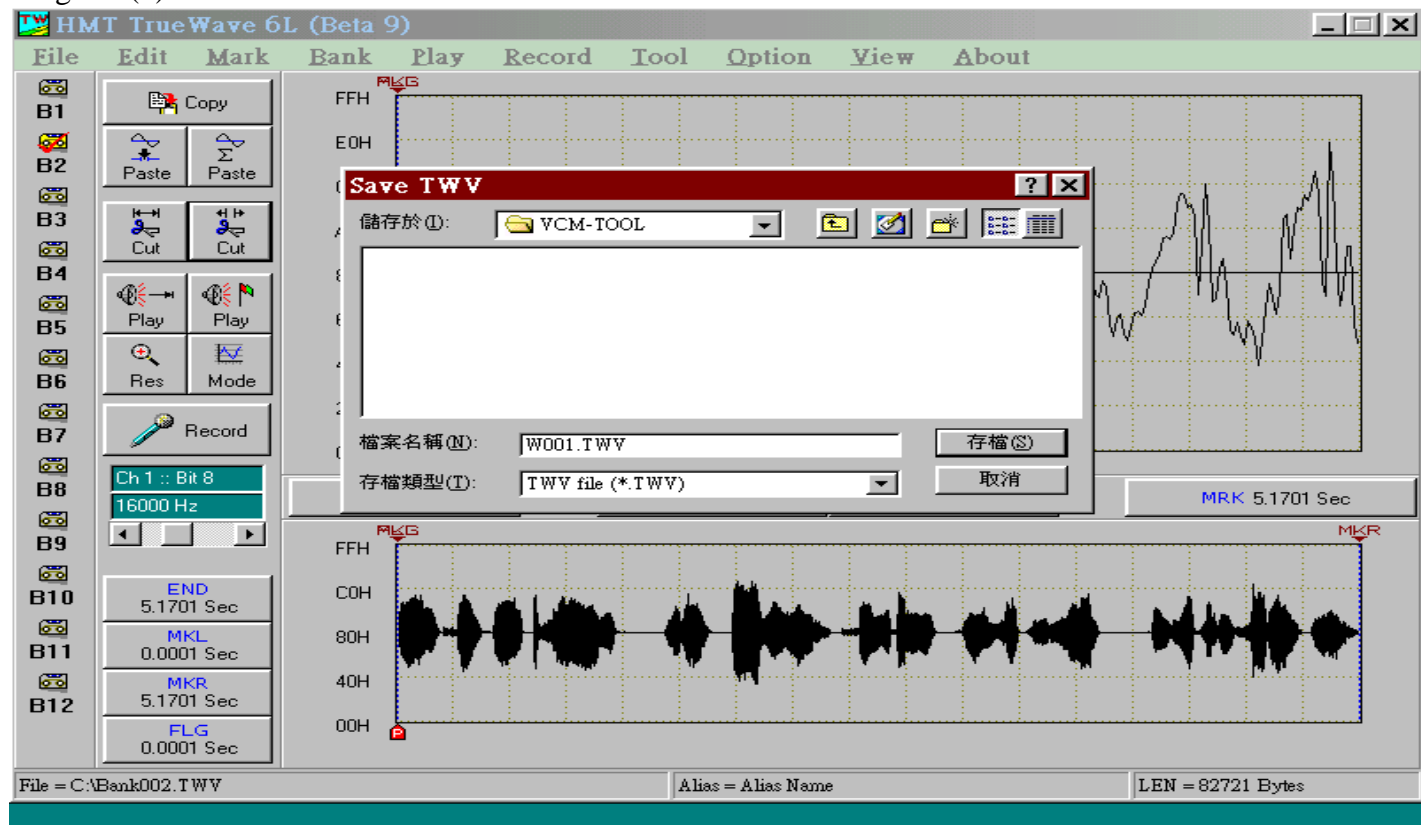


Diagram (9)

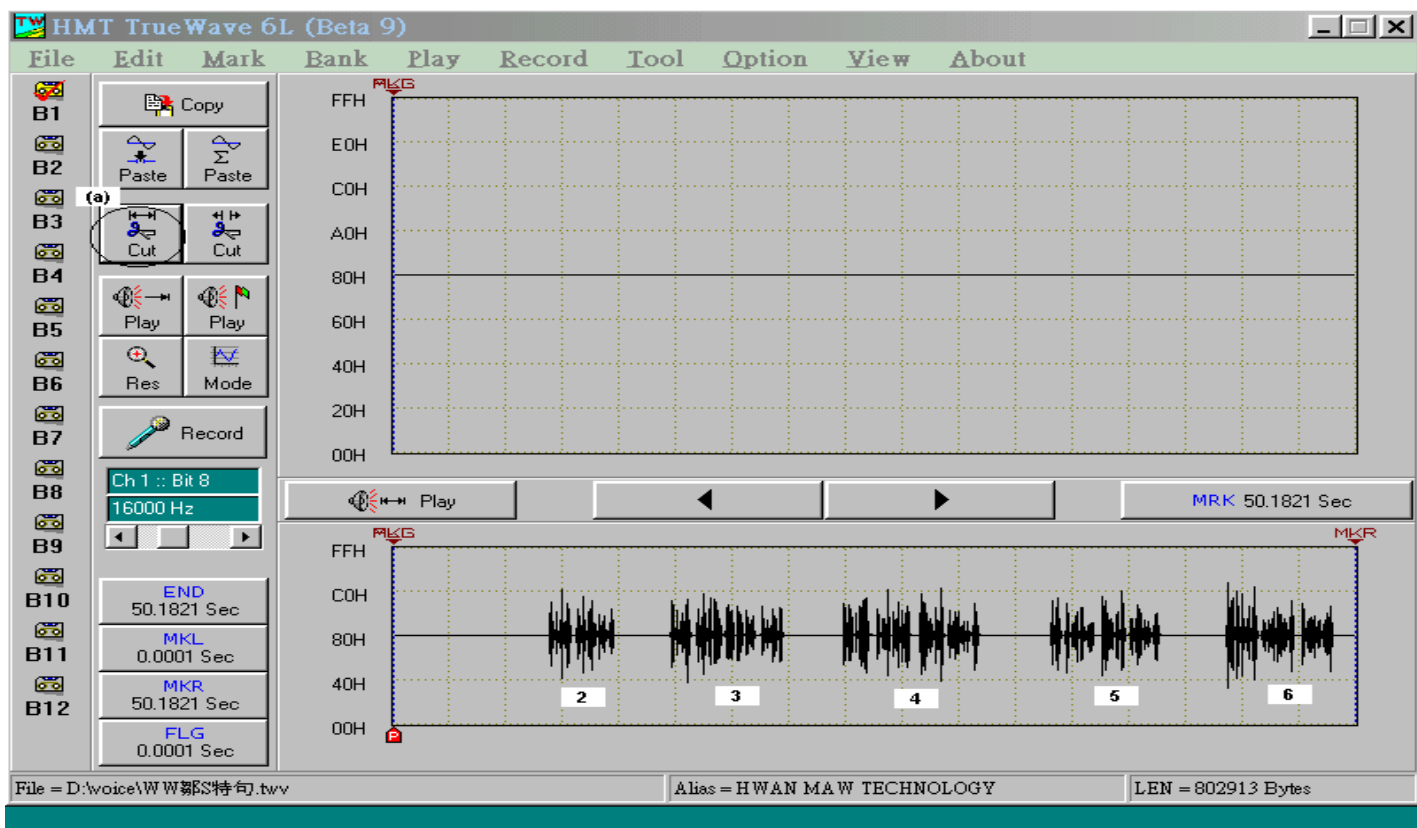


## 2-2-6 Save

### Step10 : Save

Select “save as new name” from the function bar “File“. Enter a file name and then save. The file name is W001.twv in this example. See diagram (9).

Diagram (10)



**Step 11: Refer to the steps** (from Step6 to Step10) to copy and edit the rest segments in order

- \* To click on "Cut(cut marked area)" button, (a)in the diagram (10). Delete the first segment of the voice. Then edit and save the following voice segments in order.
- \* After all of the voice segments have been edited and saved in PC, the next step is to save the voice files onto the CF Card via the CF-Linker software. Please refer to the step-example manual to make CFO files for CF Card saving method.

# SCHEDIT Schedule Setting Software

## \*\*\*SCHEDIT Schedule Setting Software Instructions\*\*\*

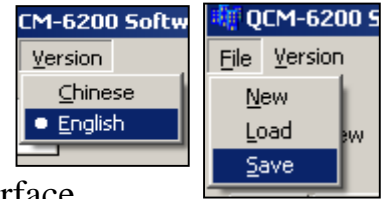
QCM-6200G can support SCHEDIT software. It can synchronize time with PC via connection to and download from PC. It enables the system more flexible and efficient. To run SCHEDIT.EXE, please load this file- SAMPLE.QCH SCHEDIT from SCHEDIT software.

Followings are the edit procedures.

### 2-3-1 Operation Menu :

1.File : New/Load/Save

2.Version(Language) : Chinese/English display on the software interface

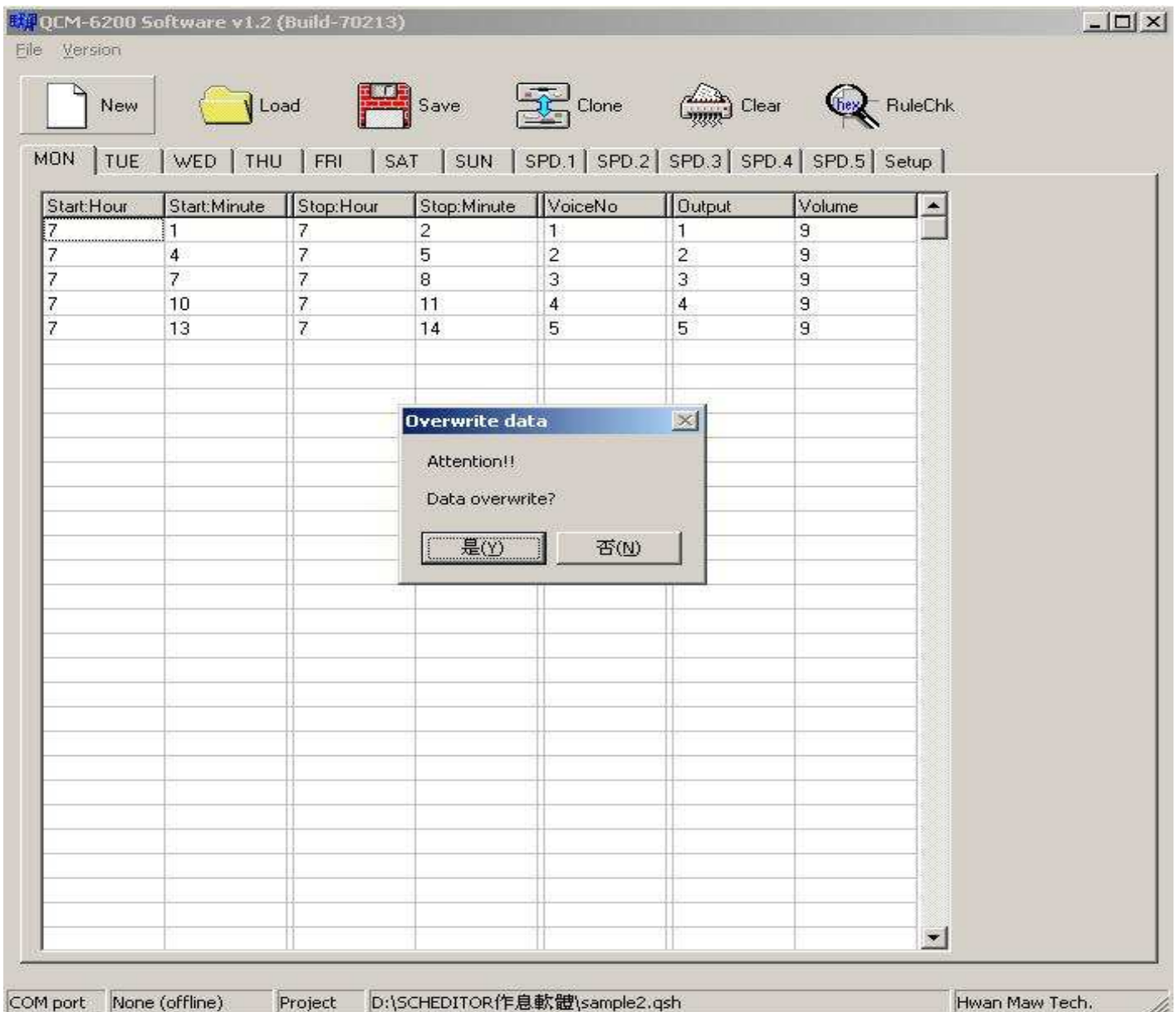


**2-3-2 New :** Click on “New” from the pull-down menu to set up a new schedule.

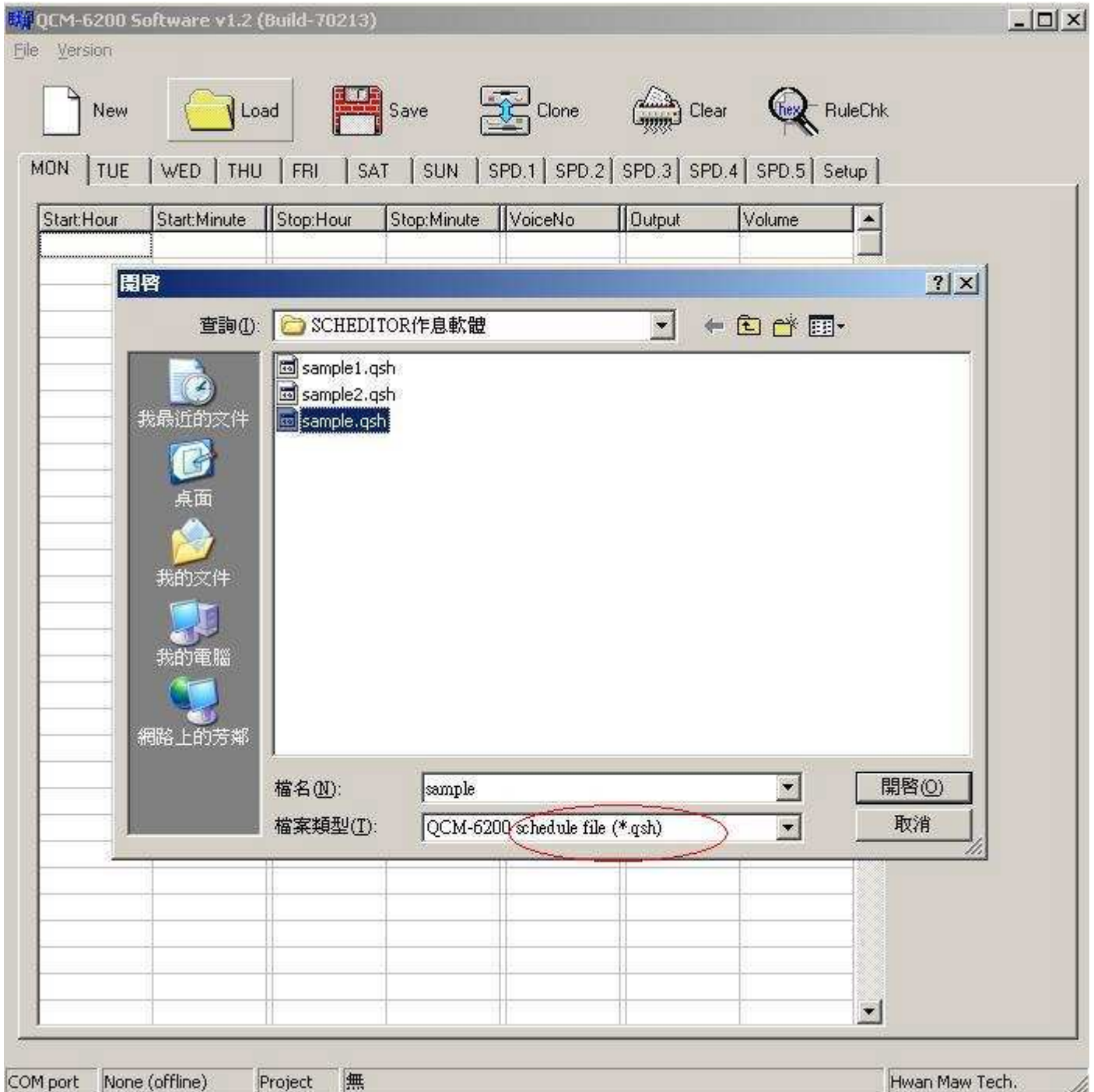
Right click on the selected row to delete!

Every new file will cover the existing file. The system will warn users before overlapping.

**Note: Built-in 6 melodies. Add new melodies to the corresponding places (number) in CF-LINKER program. The maximum can be up to 99 melodies.**

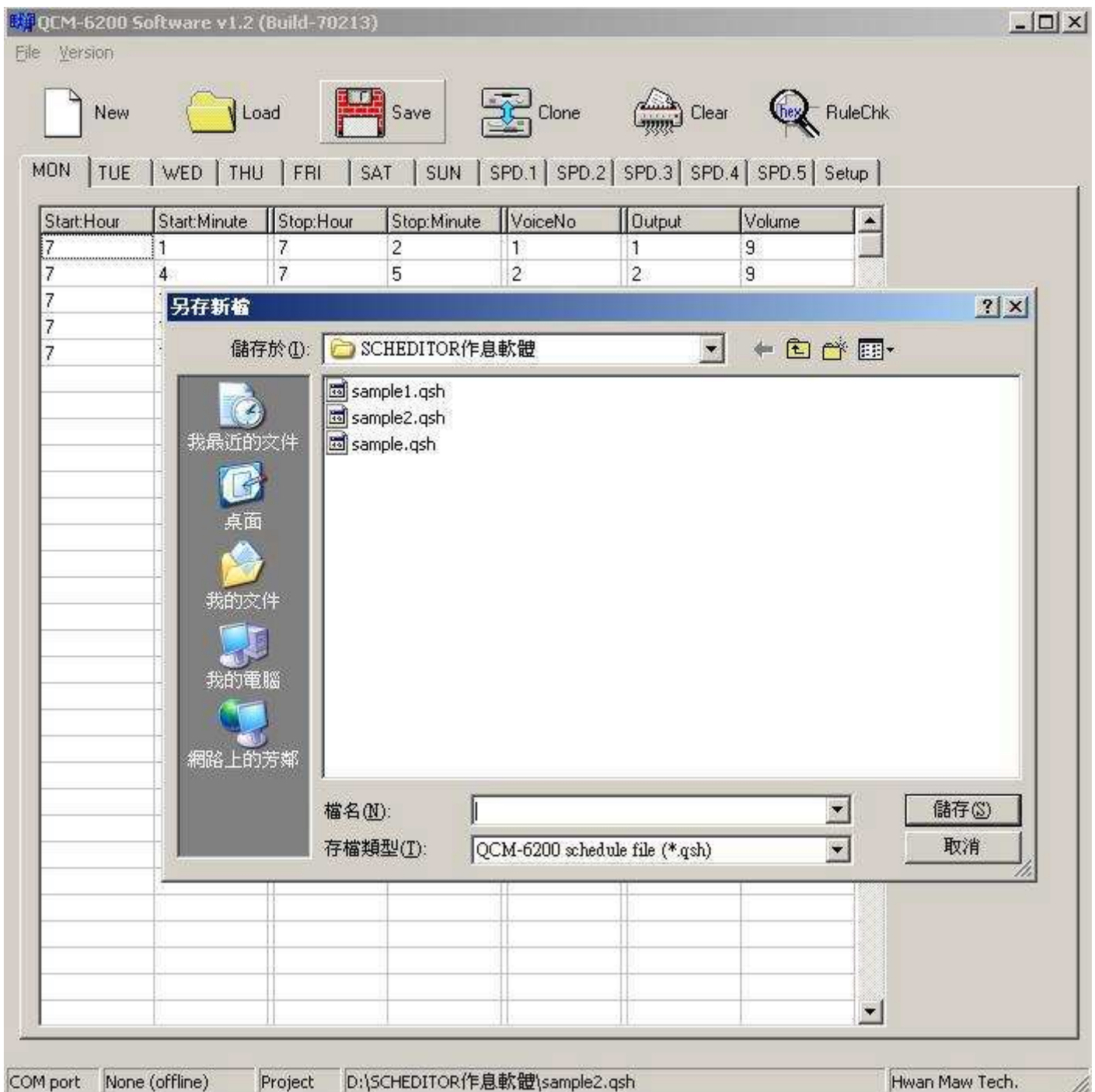


**2-3-3 Load** : Click on “Load” to open the saved file. It can be redone and revised here. The loaded file will cover the existing one. There will be a warning for data overwriting.



The extension name for QCM-6200 setting file is “.qsh”.

## 2-3-4 Save: Click on “Save” to store the schedule when the setting is done.



[Note1] If users want to revise the previous file saved before, the system will show the “Overlay file” dialogue box to ask users whether to cover the previous one or not.

## 2-3-5 Clone:

Schedule(s) on each day can be cloned solely to other preferred day(s). Click on "Clone", and then the system will show users the setting box. Click "Yes" after ticking the target day(s).

- \* As the example below. If users want to have MON schedules on THU to FRI., please tick THU to FRI from the Target area and select MON from the Source area, and then click on "Yes" button to complete the step.

QCM-6200 Software v1.2 (Build-70213)

File Version

New Load Save Clone Clear RuleChk

MON TUE WED THU FRI SAT SUN SPD.1 SPD.2 SPD.3 SPD.4 SPD.5 Setup

Start:Hour	Start:Minute	Stop:Hour	Stop:Minute	VoiceNo	Output	Volume
7	1	7	2	1	1	9
7	4	7	5	2	2	9
7	7					
7	10					
7	13					

Source

- MON
- TUE
- WED
- THU
- FRI
- SAT
- SUN
- SPD.1
- SPD.2
- SPD.3
- SPD.4
- SPD.5

Target

- MON
- TUE
- WED
- THU
- FRI
- SAT
- SUN
- SPD.1
- SPD.2
- SPD.3
- SPD.4
- SPD.5

Yes  Cancel

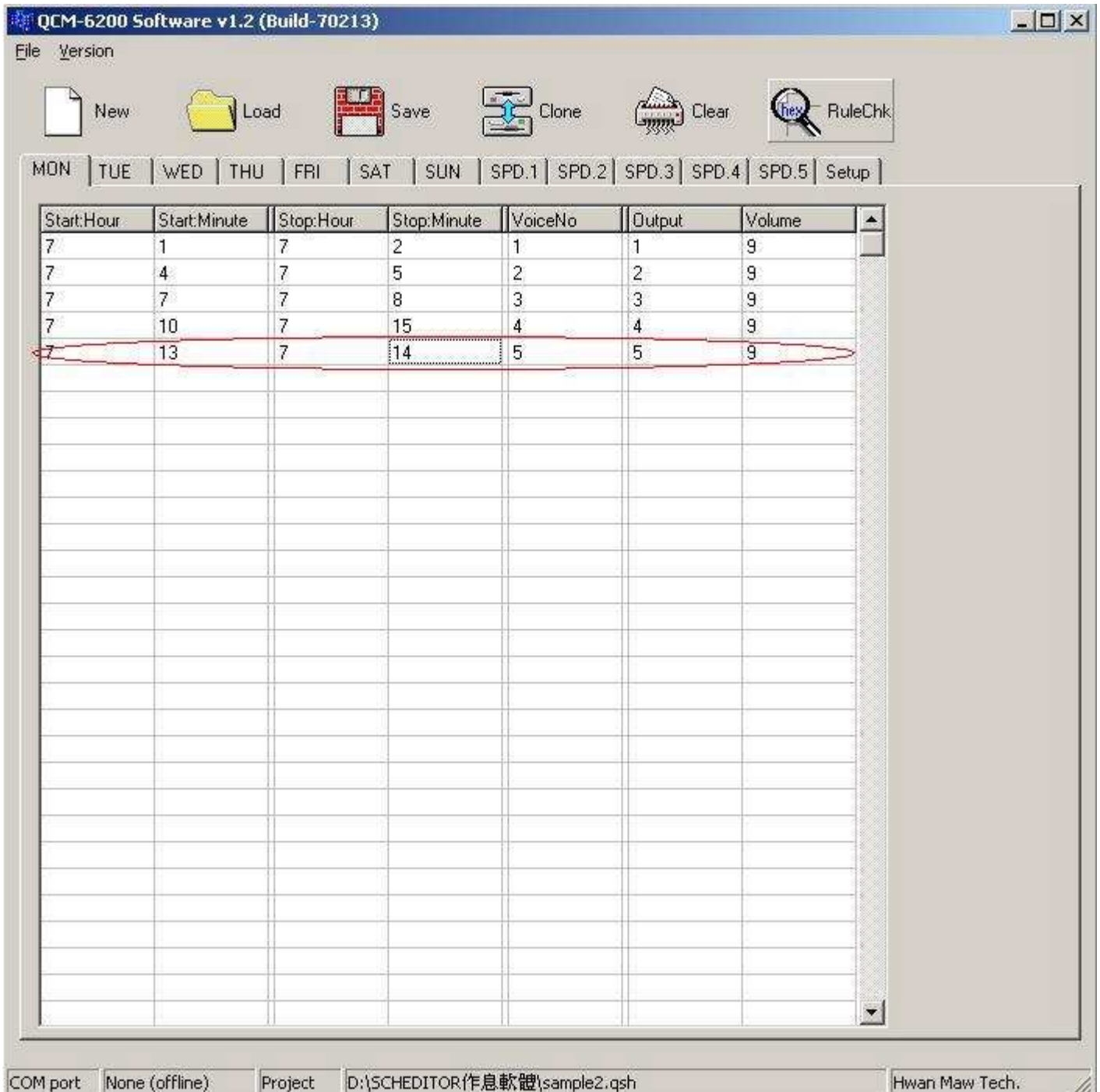
COM port: None (offline) Project: D:\SCHEDITOR\作息軟體\sample2.qsh Hwan Maw Tech.



## 2-3-7 RuleChk:

Click on “check” to delete invalid schedules in a schedule arrangement setting.  
“Invalid schedule” means time overlaps/input errors in schedules.

\*As the example shows: The schedules in the red circle are invalid messages. When the check program starts, it'll delete this line (07:13~07:14) immediately without any message boxes to warn the users.

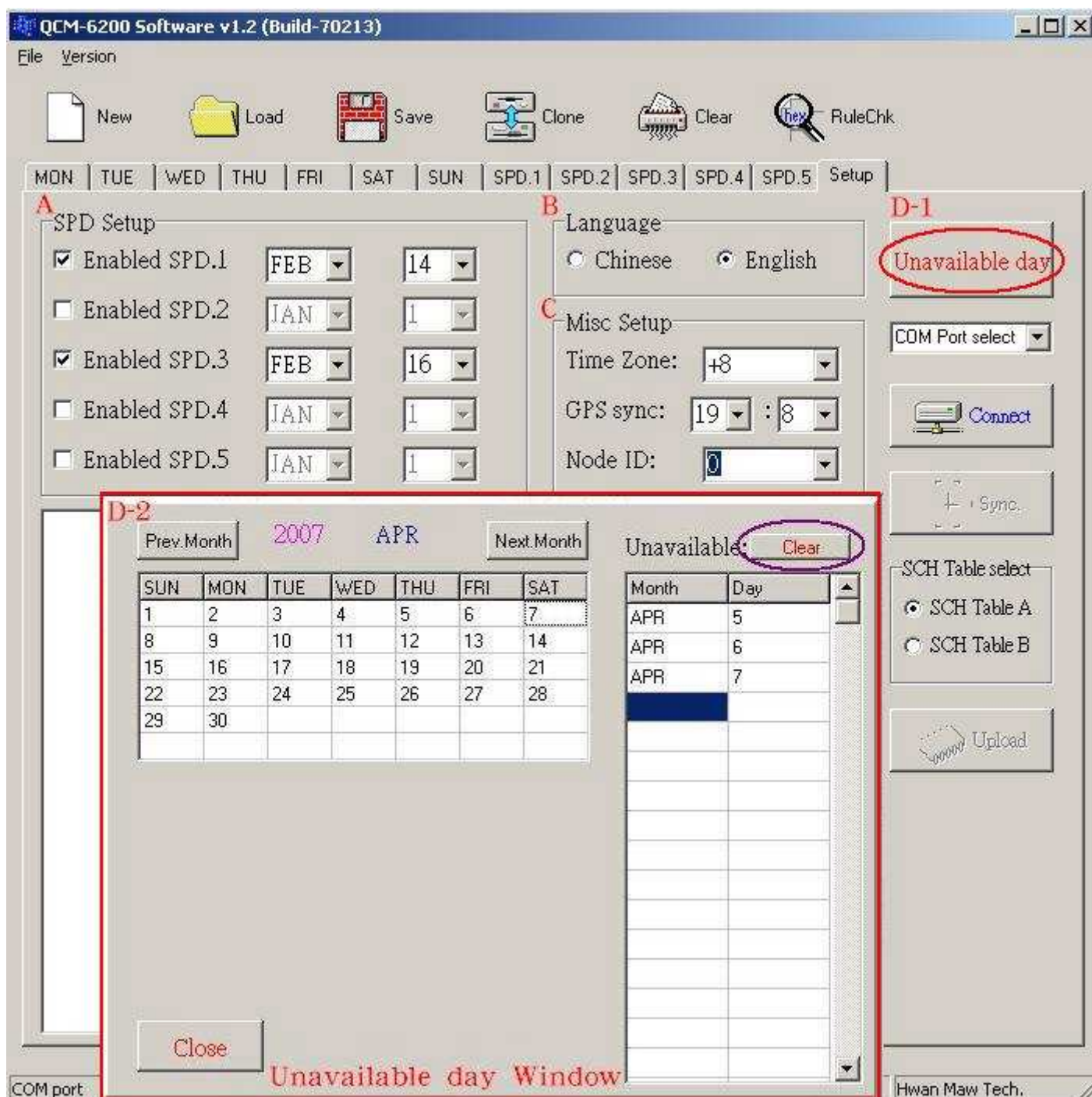


The screenshot displays the QCM-6200 Software v1.2 (Build-70213) interface. The window title is "QCM-6200 Software v1.2 (Build-70213)". The menu bar includes "File" and "Version". The toolbar contains icons for "New", "Load", "Save", "Clone", "Clear", and "RuleChk". Below the toolbar is a navigation bar with tabs for "MON", "TUE", "WED", "THU", "FRI", "SAT", "SUN", "SPD.1", "SPD.2", "SPD.3", "SPD.4", "SPD.5", and "Setup". The main area is a table with the following columns: "Start:Hour", "Start:Minute", "Stop:Hour", "Stop:Minute", "VoiceNo", "Output", and "Volume". The table contains five rows of data. The fifth row, representing a schedule from 07:13 to 07:14, is circled in red, indicating it is an invalid message. The status bar at the bottom shows "COM port: None (offline)", "Project: D:\SCHEDITOR\作息軟體\sample2.qsh", and "Hwan Maw Tech."

Start:Hour	Start:Minute	Stop:Hour	Stop:Minute	VoiceNo	Output	Volume
7	1	7	2	1	1	9
7	4	7	5	2	2	9
7	7	7	8	3	3	9
7	10	7	15	4	4	9
7	13	7	14	5	5	9

## 2-3-8 System Setting:

After the schedule arrangement settings are done, users need to set the related status and transmit it to QCM-6200G via RS-232.



**A Special Day setting:** Leave the blanks if no special day

**B Language:** Chinese / English version for QCM-6200G system interface language setting.

**C Other settings:** time zone, GPS synchronization, Node ID (Transmit the ID via PC to QCM-6200 system).

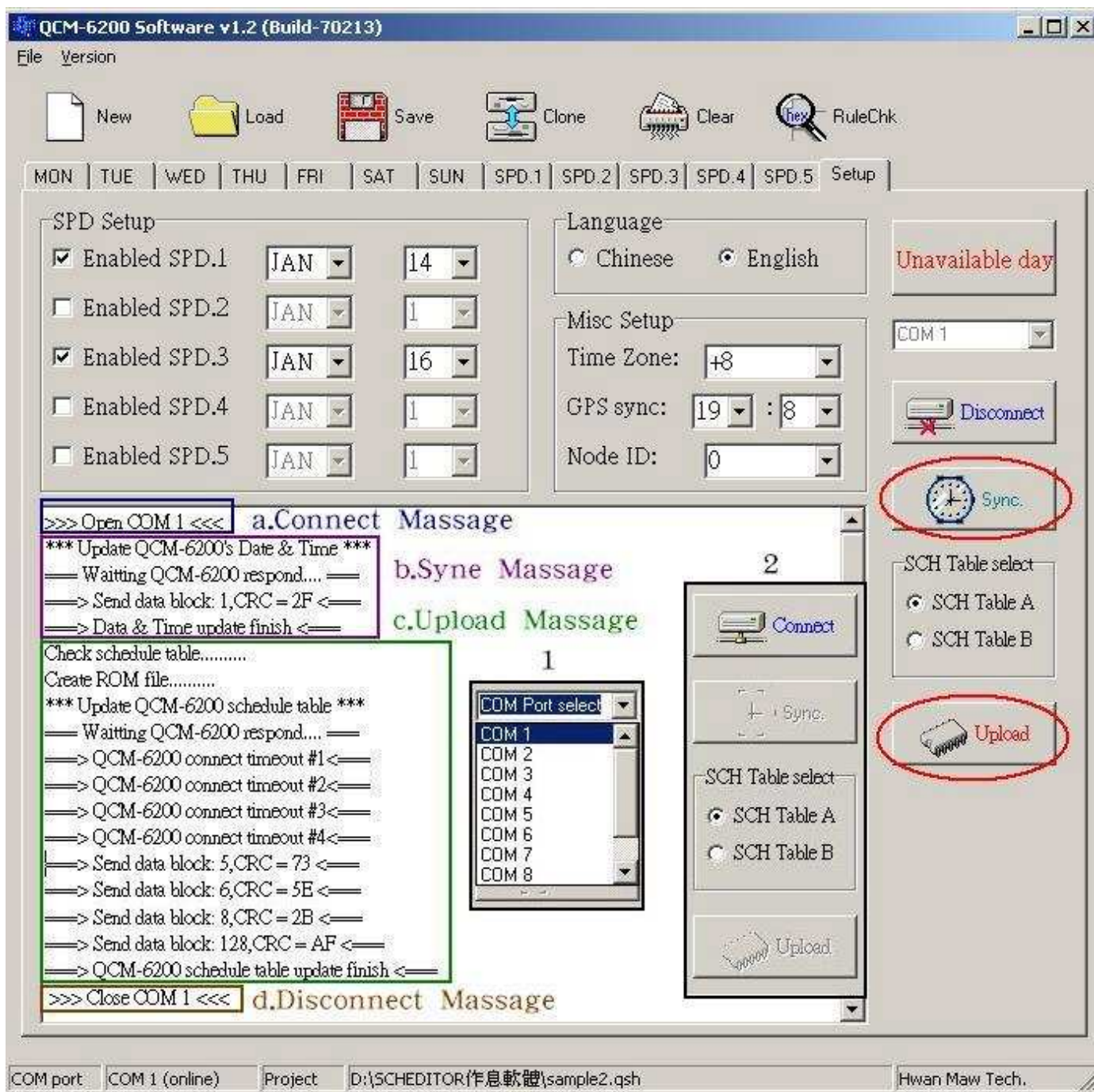
**D-1 Inactive date setting:** Enable the date as an unavailable day—non-action (like picture D-2)

[Note] 1.Clear (the button in the purple circle): Delete all the content from the inactive date!!

2.It'll store the setting automatically when users close the "Unavailable day Window".

## 2-3-9 Connection & Download Setting :

When the schedule arrangements are done, users need to set the related status and finish downloading in Setup step.



1. Choose the communication port (Black Box 1).
2. Click on “Connect” (Black Box 2), and then it will start the “Synchronize” and “Upload” functions (Please see the buttons in red circles).

[Note] 1. Before uploading, please select the schedule A or B!  
2. If users want to connect to the PC, please choose the “Communication Port” and then click on “Connect”.

*Or there'll be a dialogue box to warn users that “COM port not found!!” as the left picture shown.*

3. Upload Setting: Select “Update” from the list in QCM-6200 System and execute it. Meanwhile, select “Sync.” or “Upload” to synchronize and upload. When it's done, PC and QCM-6200 will show the message to tell users the uploading is finished, which is shown as (a)(b)(c) from the picture above.